

MACARONESIAN BOTANY AND THE *ENDEAVOUR* VOYAGE: THE COLLECTIONS AND RECORDS OF JOSEPH BANKS AND DANIEL SOLANDER FROM MADEIRA

Arnoldo Santos-Guerra*, Mark A. Carine**
& Javier Francisco-Ortega***

ABSTRACT

The efforts of Joseph Banks and Daniel Solander to document the vascular plant, bryophyte, fungal, algal, and lichen flora of Madeira during the first circumnavigation of James Cook on Her Majesty's Bark *Endeavour* (1768-1771) are documented. Banks's journal (at the State Library of New South Wales, Australia) provides accounts pertinent to the species observed in this visit and also includes a list of 330 entries that were recorded during their stay in this Portuguese island. Where possible, the species documented in this list were matched with corresponding herbarium collections held in the herbarium of the Natural History Museum, London, where the herbarium of Joseph Banks is now housed. Comparisons were made with two documents also housed in this Museum, namely: Solander's unpublished flora of Madeira (*Primitiae Florae Maderensis, sive catalogus Plantarum in Insula Madera*) and an inventory of specimens that were collected and stored inside drying books during the expedition.

KEYWORDS: botanical history, atlantic islands, plant taxonomy, botanical exploration, enlightenment.

BOTÁNICA MACARONÉSICA Y EL VIAJE DEL *ENDEAVOUR*: LAS COLECCIONES
Y OBSERVACIONES DE JOSEPH BANKS Y DANIEL SOLANDER DE MADEIRA

RESUMEN

Se examinaron, en el herbario del Museo de Historia Natural de Londres, las recolecciones de plantas vasculares, briófitos, hongos, algas y líquenes realizadas por Joseph Banks y Daniel Solander en Madeira durante el primer viaje de James Cook alrededor del mundo (1768-1771). El diario de Banks (en la Biblioteca Estatal de Nueva Gales del Sur, Australia) aporta detalles sobre las especies observadas en esta expedición y también incluye un registro de 330 entradas con las especies que se observaron durante su estancia en dicha isla portuguesa. Las especies de esta lista se estudiaron y cotejaron, cuando fue posible, con los ejemplares correspondientes del herbario del Museo de Historia Natural de Londres, donde se encuentra el herbario de Joseph Banks. Se hicieron comparaciones de este registro con datos de dos documentos que también se encuentran en este museo, a saber: la flora inédita que Solander preparó para Madeira (*Primitiae Florae Maderensis, sive catalogus Plantarum in Insula Madera*) y el inventario hecho por Banks y Solander de los especímenes recolectados durante la expedición que fueron preservados dentro de los libros que se usaron para secar plantas durante el viaje.

PALABRAS CLAVE: historia de la botánica, islas atlánticas, taxonomía vegetal, exploración botánica, la ilustración.

DOI: <https://doi.org/10.25145/j.SI.2020.03.11>

REVISTA SCIENTIA INSULARUM, 3; diciembre 2020, pp. 165-220; ISSN: e-2659-6644



I. INTRODUCTION

The three voyages of James Cook (1768-1779) were among the most important 18th century expeditions of discovery. Collectively, his trips were the first to visit all of the Macaronesian archipelagos with the exception of the Selvagen Islands (Francisco-Ortega *et al.* 2015). The first voyage called at Madeira between September 12 and 18, 1768. Two of the most important figures in the history of botany, Joseph (later Sir Joseph) Banks (1743-1820) from Britain and Daniel Solander (1733-1782) from Sweden were onboard. As part of this issue of *Scientia Insularum* devoted to the *FloraMac2018* international meeting, Prof. Jordan Goodman has focused on the main historical aspects of the visit to Madeira made by these two well-known botanists (Goodman 2020); our contribution will provide a review of the plant collections and records that they made on this island. In a subsequent study we will review the influence and impact that the contributions of Banks and Solander had on botanists such as Christen Smith (1785-1816), Leopold Von Buch (1774-1853) or Richard T. Lowe (1802-1874) who studied the Macaronesian flora, particularly in the 19th century (Santos-Guerra in prep.).

Sydney Parkinson (1710?-1771) also joined the expedition as the illustrator responsible for botany and natural history more generally with his fellow Scot Alexander Buchan (d. 1769) responsible for landscapes and figures. Both died during the voyage. On Madeira, Parkinson made drawings of Madeiran plants, 16 of which were finished as watercolors (Figure 1). The reader can find further details of these illustrations in Francisco-Ortega *et al.* (2015). Eleven of Parkinson's watercolors from Madeira resulted in engravings that were eventually published in the 20th century as part of the work known as *Banks's Florilegium* (Banks *et al.* 1985), long after they were first painted.

The herbarium collections made by Banks and Solander in Madeira are among the earliest from Macaronesia but were preceded by others made by pioneer plant collectors such as Scottish surgeon James Cuninghame (c. 1655-1709) in La Palma in 1678-1679 (Santos-Guerra *et al.* 2012); and the English physician and collector Sir Hans Sloane (1660-1753) in Madeira in 1687 (Menezes de Sequeira *et al.* 2010). Other early naturalists who contributed to the study of the Macaronesian flora included Louis Feuillée (1660-1732), who in 1724, during his second visit to the Canaries (La Gomera, El Hierro, La Palma, and Tenerife), made the first known drawings of Macaronesian plants in their habitats (Puig-Samper and Pelayo 1997).

In this paper we present a study based on the manuscript that includes the list of Madeiran plants that Banks recorded in his two-volume expedition jour-

* Calle Guaidil 16, Canary Islands, Spain. Corresponding author: asantos0511@gmail.com.

** Department of Life Sciences, Natural History Museum, London, United Kingdom.

*** International Center for Tropical Botany, Kimberly Green Latin American and Caribbean Center, Cuban Research Institute, Department of Biological Sciences, Florida International University, Miami, Florida, USA.





Figure 1. Watercolor of *Eugenia uniflora* made by Sydney Parkinson in 1768, based of material recorded in Madeira during the *Endeavour* voyage. Image copyright of the Natural History Museum of London.

nal housed at the State Library of New South Wales, Australia [available online in <https://www.sl.nsw.gov.au/banks/section-02/series-03/03-01-volume-1-joseph-banks-endeavour>; Figures 2-3]. The list is part of Volume 1 of the journal and is



August
17 63

Plymouth 1763

- 25 After having waited in this place ten days; the ship, & every thing belonging to me, being all that time in perfect readiness to sail at a moments warning; we at last got a fair wind, & this day at 3 o'clock in the even weigh anchor, & set sail, all in excellent health & spirits, & perfectly prepared, in mind at least, to undergo with cheerfulness, any fatigues or dangers that might occur in our intended voyage.
- 26 Wind still fair, but very light breezes, saw this even a shoal of those fish which are particularly call'd Porpoises by the seamen, probably the Delphinus Phocaena of Linnæus, as their noses are very blunt.
- 27 Wind fair & a fine breeze; found the ship to be but a heavy sailer, but probably the indeed we could not expect her to be any other from her build, so are oblig'd to set down with this inconvenience, as a necessary consequence of her form; which is much more calculated for stowage, than for sailing.
- 28 little wind today, in some sea water, which was taken on board, to season a cask; observed a very minute sea Insect which Dr Solender describes by the name of Podura marina. In the evening very calm, with the small

Figure 2. First page of the journal of Joseph Banks, written during the first circumnavigation voyage of James Cook. Image copyright of the State Library of New South Wales, Australia.

inserted after folio 33. It comprises 13 numbered folios and has a total of 330 plant entries. Banks's journal, including the list of specimens from Madeira, was transcribed by Beaglehole (1962b: 281-289); however, the transcription of the list inclu-

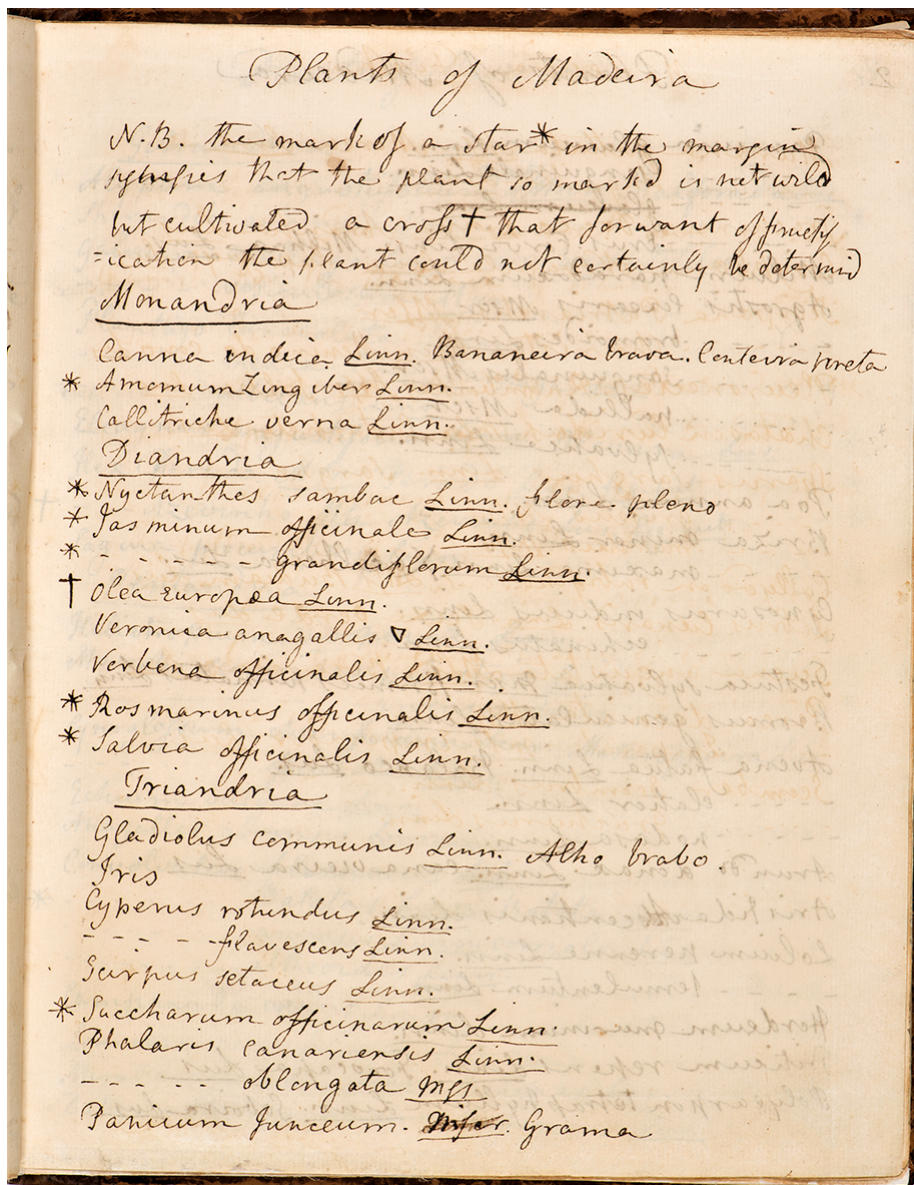


Figure 3. First page of list of plants recorded in Madeira found in the journal of Joseph Banks. Image copyright of the State Library of New South Wales, Australia.

ded some errors. In our contribution we provide a literal transcription of this part of Banks's journal (see full interpreted list further below).

One of our main aims in this paper is to provide an updated taxonomic identification of the vascular and non-vascular plants and lichens that Banks listed for Madeira in this manuscript. We matched these entries with the herbarium collections that Banks and Solander made in Madeira housed in the Natural History Museum, London (BM). As a working taxonomy we have followed Press and Short (1994), Jardim and Menezes de Sequeira (2008), and Menezes de Sequeira *et al.* (2012).

II. BOTANICAL RECORDS IN BANKS'S JOURNAL

The list of Madeiran plants found in Banks's journal comprises 330 entries (324 taxa) that include 303 spermatophytes, twelve ferns, two mosses, two liverworts, one alga, and four lichens (see full interpreted list further below). All of the identified taxa have a single entry in this list with the exception of six that have two entries each, namely: *Convolvulus althaeoides* (entries 65, 68), *Cynoglossum creticum* (entries 61, 62), *Malva sylvestris* (entries 203, 204), *Ramalina calicaris* (entries 321, 325), *Olea maderensis* (entries 7, 54), and *Salix x rubens* (entries 287, 288). Approximately half of the entries recorded in this list correspond to cultivated (72 entries) or introduced taxa (67 entries). Of the remaining entries, 18 are Macaronesian endemics, 19 are Madeiran endemics, and 153 are non-endemic natives.

For 94 of the entries (93 taxa), local Portuguese common names are indicated (in many cases abbreviated as "Lus."). The abbreviations "Mscr." or "Mss." were used to refer to putative new taxa, 37 in total, recognized by Banks and Solander. Since they were used only in a manuscript, they are unpublished designations although many were subsequently published by other botanists. Banks's manuscript also states (as "fig. pict.") those taxa which were illustrated by Sydney Parkinson. Two symbols were used to further identify the recorded material: asterisks (*) refer to those species that Banks and Solander regarded as cultivated or introduced (although some entries for cultivated plants are not marked) and plus symbols (+) denote entries for which they were uncertain of their taxonomic identification.

During their short stay in Madeira, Banks and Solander only collected "in the neighborhood of the town [Funchal], never going above three miles from it" (September 13 record in Banks's journal). However, they were able to make an extremely rich herbarium collection including species such as *Juniperus oxycedrus* (= *J. cedrus* subsp. *maderensis*), *Taxus baccata* and *Vaccinium padifolium*, all of which are from inland parts of the island and do not occur naturally around Funchal. It is likely that they received specimens from collaborators during this visit. Thomas Heberden (1703-1769), a British physician and botanist who lived and died in Madeira (Heberden 1990) was instrumental in the discovery of botanical novelties by Banks and Solander in Madeira. Regarding the interactions that Banks and Solander had with Heberden during their stay in Madeira, from Rio de Janeiro Solander wrote a letter to the British naturalist John Ellis (c. 1710-1776) on 1 December 1768 (Beaglehole 1962b: 309-310) that stated:



If any of your friends go to Madeira, advise them to get recommendations to Dr Heberden; he has more influence there than the governor. He is just such a philosopher as my friend, and very communicative. His many instruments, mathematical and optical, have procured him the name of *il Doctore Docto*.

Heberden had earlier lived in the Canary Islands (Gran Canaria and Tenerife) between the 1730s and 1747. He wrote one article about Mount Teide, Tenerife (Heberden 1752) but in 1740 he faced the Inquisition and was sent to jail. Eventually, he left the Canaries for Madeira (González Lemus 2003, 2012). In Madeira, it is likely that some of the material that Banks and Solander collected came from the gardens and plausibly the herbarium collections of Heberden himself. Interestingly, Heberden wrote a manuscript on the trees growing in Madeira, a copy of which was given to Banks as a gift “together with such specimens as he had in his possession” (entry for September 17 in Banks’s journal). It appears that this manuscript by Heberden has not survived as the only publications that he wrote on Madeira concerned the climate and public health of the island as well as astronomical and geological observations and an account on an earthquake that happened in 1761 (Heberden 1990).

Banks and Solander informally named a new genus “Heberdenia” in Heberden’s honor. Later, this taxon was effectively published by De Candolle (1841: 79) making reference to Banks’s records from Madeira (accepted name *Heberdenia* Banks ex A.DC.). There has been some confusion on the correct species name of this Macaronesian endemic [*Heberdenia excelsa* (Aiton) Banks ex Roem. & Schult. vs. *H. bahamensis* (Gaertn.) Sprague]. Treatments targeting this species indicate *bahamensis* is the correct species epithet for this taxon (De Wit 1957; Ståhl 1996), and this taxonomic arrangement is followed by us.

All of the species in Banks’s list were identified with scientific names except four for which specimens without reproductive parts were collected: “Marmulano” (*Sideroxylon mirmulans* R.Br.), “Faya” (*Morella faya* (Aiton) Wilbur), “Pao branco” (*Picconia excelsa* (Aiton) DC.) and “*Salvia major...*” (*Teucrium betonicifolium* Jacq). Banks placed the “Marmulano” in the Linnean class *Hexandria*. Later, Francis Masson (1741-1805), first plant collector of the Royal Botanic Gardens, Kew, who botanized extensively in Madeira, Tenerife, and the Azores (São Miguel, Faial, and also possibly São Jorge) between 1776 and 1779 (Francisco-Ortega *et al.* 2008), found this species again. In a letter he sent to Banks, dated 4th April 1777, Masson indicated that it belonged to the genus *Sideroxylon* L. (Lobin *et al.* 2005; Santos Guerra *et al.* in preparation). This interesting tree species was later described by Robert Brown (in Buch, 1825: 193) as *S. mirmulans*.

“Pao branco” the second species that remained unidentified in Banks’s list was subsequently described in *Hortus Kewensis* (Aiton 1789a) as *Olea excelsa* Aiton, also based on Masson’s collection. Aiton (1789b) used material collected by Masson to describe, the third of these “enigmatic species”, the “Faya” that was named *Myrica faya* Aiton. The last of the species that Banks could not place taxonomically, was identified on Banks’s list using a *Salvia* polynomial name published by Sloane (1707). Francisco-Ortega *et al.* (in this issue) provided a review on the taxonomic history of this taxon indicating that *Teucrium betonicifolium* Jacq. is its correct name.



DECANDRIA

MONOGYNIA.

bicapsularis. CASSIA. Lin. sp. pl. 538. 6.
Hab.

graveolens. RUTA. Lin. sp. pl. 548. 1.
Arrida. Incolis.
Hab.

arborea. CLETHRA. Micc. p. 566.
Fig. pict.
Solhada. Incolis.
Hab.

Rami glabri teretes, cicatricibus petiolorum tuberculatis. Folia petiolata, opposita, dense se invicem appressunguala, ovato-lanceolata, acuta, serrata, utrinque glabra, supra viride viridica, subtus pallida; plerumque 4 $\frac{1}{2}$ uncias longa, 1 $\frac{1}{2}$ lata. Petioles glabri foliis quadruplo vel quintuplo breviores. Pedunculis plures ex uno axillo, foliis longiores, hirti, inbrotium ramosi. Flores e rubiginosis, albescentes, evadentes in racemos longos simpliciter dispositi. Pedicellis filiformibus, villosiusculis, aequalibus, tricorni vel qua tuor linearum longitudine.

Porianthium pentaphyllum, foliis ovalis, obtusis, ex rectis, concavis, aequalibus, persistentibus, ex his pubescentibus.

Petalis quinque, patentibus, calyce duplo longiora, longibus angustatis, brevibus; saminibus obovatis, obtusis, simis.

Stamenta decem, capillaria, unguibus corollae paulo longiora, eorumque basi affixa, scilicet duo in singulo petalo. Anthera, oblonga, erecta.

Serimen inferum, subrotundum, villosum. Stylus filiformis, erectus, persistentis, longitudo staminum, post floriditatem duplo longior. Stigma ma trifidum: laminis filiformibus, simplicibus.

Capitula subrotunda, calyce obsoleta, bivalvis, trilocularis.

Semina plurima.

Nostra differt a Characteribus Senecio Clethrae in Lin. Sp. plant. p. 221: quod calyx omnino pentaphyllus, forte ita etiam in Clethra abrotifolia Lin. sp. pl. 566. 1. qua ulterius examinanda, pro differentia specifica meliori.

DIGYNIA.

prolifer. DIANTHUS. Lin. sp. pl. 587. 4.
Gravo bravo. Incolis.
Hab.

Caryophyllus DIANTHUS. Lin. sp. pl. 587. 6. Hab.

Figure 4. Page 16 of the *Primitiae Florae Maderensis, sive catalogus Plantarum in Insula Madera*, a work that was prepared by Daniel Solander and remained unpublished. From top to bottom: *Senna bicapsularis*, *Ruta graveolens*, *Clethra arborea* (including the full description of this Madeiran endemic), *Petrorhagia prolifera* and *Dianthus caryophyllus*. Image copyright of the Natural History Museum of London.

III. PRIMITIAE FLORAE MADERENSIS, SIVE CATALOGUS PLANTARUM IN INSULA MADERA AND EARLY IMPACT OF THE COLLECTIONS

As with other regions visited during the *Endeavour* voyage, a manuscript flora was prepared for Madeira by Solander (*Primitiae Florae Maderensis, sive catalogus Plantarum in Insula Madera*), but it remained unpublished (Figure 4). According to annotations found in this manuscript, this copy was prepared by Sigismund Bacstrom (c.1750-1805) from Germany, who was employed as secretary to Joseph Banks between 1772 and 1775 (Cole 1980). The manuscript comprises the first 41 pages of a manuscript volume entitled “Florae of the Countries visited during Capt. James Cook’s first Voyage” (Botany Manuscripts MSS BANKS COLL SOL; barcode 338012). Whilst unpublished, the Madeiran findings of Banks and Solander were relevant for later researchers. For example, in the late 18th century, L’Héritier (1788) studied material collected by Banks and Solander for his description of *Bystropogon punctatus*. Robert Brown (1773-1858), Banks’s librarian and later the first keeper of the Banksian (later Botanical) Department of the British Museum, based his first comprehensive list for the Madeiran flora mostly on Masson’s collections housed at the BM but the collections made by Banks and Solander were also one of the obvious sources for his study. The actual date when Brown prepared this list is unknown but this floristic account remained unpublished until the works of Buch (1825: 189-199) and Britten (1904). It is noteworthy that Brown himself visited Madeira in 1801 in route to Australia on board HMS *Investigator* (Moore 2001).

Solander’s *Primitiae Florae Maderensis, sive catalogus Plantarum in Insula Madera* included 351 entries for 345 taxa. Twenty of these entries refer to polynomial names published by Plukenet and Sloane (revised by Francisco-Ortega *et al.* 1994 and Menezes de Sequeira *et al.* 2010). We infer that the remaining entries (331 entries, 325 taxa) are for plants that were recorded or collected in Madeira by Banks and Solander as they match those found in Banks’s journal; however, four of these 325 taxa [*Boletus* sp. (Boletaceae), *Bystropogon punctatus* (as *Menthastrum Mentha maderensis* in Solander’s list), *Lichen subfuscus* L. (Lecanoraceae), and *Lotus corniculatus* L. (= *L. lancerottensis* Webb & Berthel.) (Fabaceae)] were not listed in Banks’s journal. *Lichen subfuscus* [accepted name *Lecanora subfusca* (L.) Ach. (LIAS 1995-2020)] and the fungal genus *Boletus* s.l. both occur in Madeira (Carvalho *et al.* 2008, Melo and Cardoso 2008) but no herbarium material collected by Banks and Solander was seen during the course of this study. Two of the taxa recorded in Banks’s journal (*Campanula erinus* and the garden plant *Gardenia jasminoides*) are not found in *Primitiae Florae Maderensis*.

In this pioneering flora, Solander wrote descriptions for 15 Madeiran/Macaronesian endemics that later were validly published by other taxonomists, namely: “*Alypum longifolium*” (*Globularia salicina*); “*Clethra arborea*” (*C. arborea*, Figure 4), “*Crepis tenuifolia*” (*Tolpis succulenta*, *C. succulenta*); “*Heberdenia excelsa*” (*H. bahamensis*, *Anguillaria bahamensis* Gaertn.), “*Hypericum evectum*” (*H. grandifolium*), “*Hypericum glandulosum*” (*H. glandulosum*), “*Ilex azevinho*” (*I. canariensis*), “*Ilex perado*” (*I. perado* subsp. *perado*), “*Laurus nitida*” (*Apollonias barbujana*, *L. barbu-*



jana Cav.), “*Lavandula pinnata*” (*L. pinnata*), “*Laurus foetens*” (*Ocotea foetens*, *L. foetens*), “*Lotus glaucus*” (*L. glaucus*), “*Rubus pedatus*” (*R. serrae*), “*Smilax latifolia*” (*S. pendulina*), and “*Vaccinium elevatum*” (*V. padifolium*).

IV. THE HERBARIUM RECORD

Shortly before his death in 1820, Banks bequeathed his herbarium to his librarian Robert Brown on the condition that it would become the property of the British Museum on Brown’s death – unless Brown chose to transfer it earlier. Negotiations for its transfer began soon after Banks’s death. Favourable terms were agreed and in 1827 the herbarium was transferred with Brown appointed Keeper of the newly formed Banksian Department as part of the agreement. The herbarium was transferred to South Kensington, London in 1881 where it remains today and forms the one of the foundation collections of the Natural History Museum herbarium (BM).

We have found matching herbarium specimens in three different collections of the Natural History Museum herbarium (Figures 5-7), namely (1) the General Herbarium, (2) a bound volume entitled “*Plants of Cook’s First Voyage 1768-1771*” held in the Historical Collections Room, and (3) inside a drying book (‘Madeira III’) made up of loosely bound uncut pages from Adison’s *Notes upon the twelve books of Paradise Lost*, published in 1719. This was one of seven bundles of plants resulting from Banks and Solander’s collecting activities in Madeira. It is the only one to survive intact and with some specimens still contained within it.

During the course of Cook’s voyage specimens were stored inside these drying books [see Groves (1962) for a full account regarding the protocols followed by Banks and Solander in preparing and recording the extensive collections of specimens that were made during this *Endeavour* voyage]. After Banks and Solander’s return to Britain this material was removed and subsequently mounted on sheets (material now in the General Herbarium) and/or inside the volumes of “*Plants of Cook’s First Voyage 1768-1771*” (Edwards 1978), located in the historical collections room at BM.

In total, there are 210 collections for 206 taxa in the Natural History Museum herbarium. Sixteen of the taxa are Madeiran endemics, 18 are Macaronesian endemics, 100 are non-endemic natives, 60 are introduced, and 12 are cultivated. These specimens represent ten fern and 196 spermatophyte taxa. As the list of material recorded in Banks’s journal has 163 introduced taxa, these data show that 44% of the records for introduced taxa lack matching specimens in the herbarium. This suggests that Banks and Solander mostly focused their collecting efforts on plants belonging to the native flora, including the endemics.

One-hundred and ten of these collections (108 taxa) are found only in the General Herbarium, 25 of them (25 taxa) are found only in the bound volume of *Plants of Cook’s First Voyage* and 75 (75 taxa) are shared by these two herbarium holdings. Unfortunately it was not possible to fully assess the contents of the drying book (Madeira III) because of its fragility. However, it is clear that the drying book has relatively few specimens and it is unlikely that there are any that are not found in the General Herbarium or the *Plants of Cook First Voyage* bound volume.





Figure 5. Herbarium specimen of *Teucrium betonicifolium* collected by Banks and Solander in Madeira during the *Endeavour* voyage. This is the lectotype of *T. betonicum* L'Hér., as designated by Francisco-Ortega *et al.* (in this issue). Image copyright of the Natural History Museum of London.





Figure 6. Sheet with specimens collected by Banks and Solander in Madeira that is part of a bound volume (folio 2) entitled *Plants of Cook's First Voyage 1768-1771* held in the Historical Collections Room of the Natural History Museum of London. Specimens are identified (left to right) as follows: **Top row:** *Globularia salicina*, *Galium productum*, *Ilex perado perado* subsp. **Second row from top:** *Ilex canariensis*, *Heberdenia bahamensis*, *Achyranthes sicula*. **Third row from top:** *Chenopodium album*, *Ammi visnaga*, *Juncus effusus*, *Linum bienne*. **Bottom row:** *Rumex maderensis*, *Vaccinium padifolium*, *Sibthorpia peregrina*, *Polygonum aviculare*.

Image copyright of the Natural History Museum of London.

THE DRYING BOOK INVENTORY

The Natural History Museum library houses a further list of Madeiran plants that forms part of a manuscript entitled 'Catalogue of the plants collected at Madeira, Brazil, Tierra del Fuego and the Society Islands' (31pp, Botany Manus-

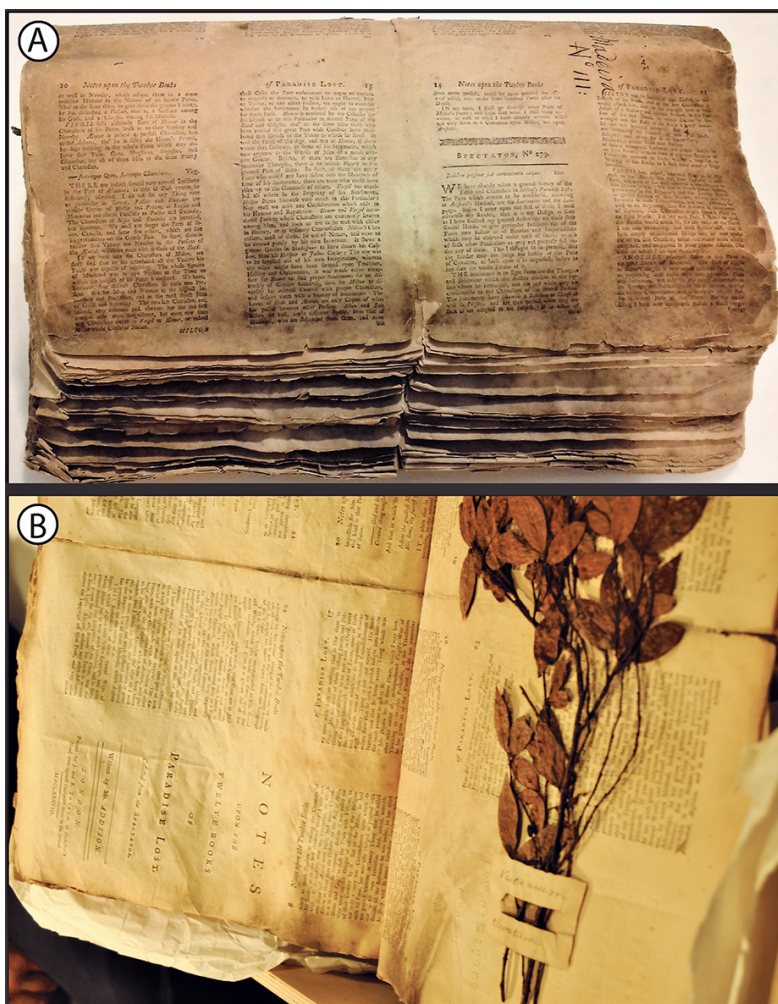


Figure 7. Drying book (Madeira III) that contains plant specimens collected in Madeira during the visit of *Endeavour* from 12-18 September, 1768. **A:** General view of the bundle that makes this particular drying book. **B:** Specimen of *Vaccinium padifolium*, notice that the bottom of folio that faces the specimen has the full title of one of the uncut pages of the book that was used to dry plants during the expedition. Image copyright of the Natural History Museum of London.

cripts MSS BANKS COLL; barcode 138798). It documents 256 entries (252 taxa) for spermatophytes (231 taxa), ferns (11 taxa), algae (one taxon), mosses (two taxa), liverworts (two taxa), and lichens (5 taxa) for which herbarium material was collected in Madeira (Figure 8). The last page of this manuscript erroneously indicates that it





Madera. N^o of Book. N^o of specimens

<i>Canna indica</i> Linn. 11. 1. 1.
<i>Annonum</i> <i>Tomiliter</i> 1.2. 1.
<i>Stictanthes</i> <i>Tomiliter</i> 8.2. 7.
<i>Veronica</i> <i>Magallies</i> 16.16. 1.
<i>Verbena officinalis</i> 29.15. 1.
<i>Cladobolus communis</i> 52.1. 1. 3.
<i>Cyperus rotundus</i> 67.6. 1.
<i>flavescens</i> 68.15. 1. 7.
<i>Scirpus setaceus</i> 73.12. 1. 9.
<i>Phalaris canariensis</i> 79.1. 1.
<i>oblongata</i> <i>Mscr</i> 1.
<i>Panicum juniceum</i> <i>Mscr</i> 1. 4.
<i>Crus Corvi</i> 84.9. 1. 1.
<i>glauceum</i> 83.4. 1. 3.
<i>sanguinale</i> 84.13. 1. 6.
<i>Melinis paradoxum</i> 30.3. 1. 2.
<i>Agrostis linearis</i> <i>Mscr</i> 85. 1.
<i>bromoides</i> <i>M.30.</i> 1.
<i>sanguinalis</i> <i>Mscr</i> 1. 4.
<i>pubulida</i> <i>Mscr</i> 1.
<i>sylvatica</i> 99.7. 1.
<i>Poa annua</i> 99.7. 1. 2.
<i>Briza minor</i> 102.1. 1. 2.
<i>maxima</i> 103.4. 1. 3.
<i>Cynurus indicus</i> 106.8. 1. 3.
<i>echinatus</i> 105.2. 1. 2.
<i>Festuca sylvatica</i> <i>Mscr</i> 115. 1.
<i>Bromus geniculatus</i> <i>M.33.</i> 1.
<i>Avena fatua</i> 118.7. 1. 2.
<i>elatior</i> 117.2. 1. 1.
<i>Ornithoglossum donax</i> 120.2. 1. 2.
<i>Orchis Fida adscensionis</i> 121.1. 1. 8.
<i>Salix peruviana</i> 122.1. 1. 1.
<i>temulentum</i> 122.8. 1. 2.

Figure 8. First folio of the eight folio list (256 entries) that has an inventory of the Madeiran collections made by Banks and Solander. This is part of the index to specimens that were stored inside drying books during Cook’s voyage. Numbers after each name refer to the page and plant numbers in the second edition of Linnaeus’ (1762, 1763) *Species plantarum*. “N^o of Book” refers to the drying book number where the specimen was stored. The number of specimens made per collection is also indicated. The 34 plant entries listed in this page match entries found in the first two pages of the list of material included in Banks’s journal. Image copyright of the Natural History Museum of London.

comprises 253 entries instead of 256. Based on notes written on this manuscript by Eric W. Groves (1923-2012) in 1982, it appears that this list was written by Banks. All of the entries with the exception of *Lotus corniculatus* (= *L. lancerottensis*), *Lichen subfuscus* (see above discussion regarding the status of these two species in Banks’s collections), and *Bystropogon punctatus* are also recorded in the list of plants

in Banks's journal. The manuscript is an inventory of the material that was placed inside the drying books during the first part of the *Endeavour* voyage. It provides details of the number of duplicates made for each collection and the drying book in which each collection was stored (numbered I through VII for Madeira). The five species with the highest number of duplicates were *Apollonias barbujana* (14 duplicates), *Heberdenia bahamensis* (20 duplicates), *Ilex perado* (13 duplicates), *Lythrum hyssopifolia* (14 duplicates), and *Ocotea foetens* (14 duplicates). Four species (*Acanthus mollis*, *Chelidonium majus*, *Equisetum arvense*, and *Tropaeolum majus*) with matching specimens in BM were not found in this manuscript but were included both in Solanders' *Primitiae Florae Maderiensis* and in Bank's journal list.

For 59 (23%) of the 252 taxa listed in this inventory, there are no matching specimens in BM. Twenty-five of these taxa are introduced, three have been identified as Madeiran endemics (*Aichryson divaricatum*, *Hedera maderensis*, and *Sideritis candicans*). Among the 25 non-endemic natives that lack specimens, one is an alga, five are lichens, four are bryophytes, two are ferns, and the remaining 13 are spermatophytes. The fate of these specimens is not clear. However, we do know that when the Banksian herbarium was transferred from his house in Soho Square to the British Museum in 1827, a substantial proportion was unmounted [estimated by Brown in 1834 to comprise 1700 bundles (Murray 1904: 80)]. The missing specimens may have been lost between the point of collection and their eventual processing for the herbarium. Furthermore, bomb damage to the BM herbarium during the Second World War affected Banks's collections (Groves 1962) and could also account for the absence of some specimens.

V. TAXONOMIC UPDATE OF THE LIST OF MADEIRAN VASCULAR PLANTS, BRYOPHYTES, LICHENS, AND ALGAE REPORTED IN BANKS'S JOURNAL

Below we provide a transcription of the list of vascular plants, bryophytes lichens, and algae recorded in Madeira as found in Banks's journal housed in the State Library of New South Wales, Australia. Entries are presented in the same order as they were listed by Banks which followed Linnean orders. For each entry we assign sequential entry numbers to help the reader to locate each of these records. These were not in the original list. Appendix 1 provides a taxonomic index that ties the identified species with the particular entries found in Banks's list. For each entry we transcribed the name as written in Banks lists, this is followed by text inside brackets that provides the accepted scientific name. We also provide information on status using the following abbreviations: **Cult.** = Cultivated, **Intr.** = Naturalized non-natives, **Nat.** = Non-endemic natives, **Mad.** = Madeira endemics, **Mac.** = Macaronesian endemics, **Notes** = Additional comments. For the most part, notes concern determinations provided by taxonomic experts. Where there is no indication that the specimen was revised for the Flora of Madeira project (Press and Short 1994), that was based at BM, this is indicated. We list specimens for each entry herbarium collections at the BM (**Herb.**) following this code: GH = General herbarium of the



Natural History Museum of London, SCV = Volume with specimens from Cook's first voyage. Concerning entries recorded in the two other documents (**Other lists**), the following code is followed: NPL = Banks's index for specimens that were stored inside the drying books; SOL = Solander's *Primitiae Florae Maderensis*.

Sources to check the current presence of these taxa in Madeira were Press and Short (1994; hereafter Flora of Madeira in "Notes"), Carvalho *et al.* (2008), Jardim and Menezes de Sequeira (2008), Melo and Cardoso (2008), Sérgio *et al.* (2008), and Menezes de Sequeira *et al.* (2012).

Our taxonomic identifications are based on the study of the available herbarium material collected by Banks and Solander. For those entries for which no specimens were located, taxonomic inferences were based on: (1) the scientific and common names reported in Banks and Solander's lists; (2) references to names reported in the second edition of Linnaeus's (1762, 1763) *Species plantarum*; and (3) other sources. References to Linnaeus (1762, 1763) are found in Solander's *Primitiae Florae Maderensis, sive catalogus Plantarum in Insula Madera* and in the inventory of specimens that is part of the *Catalogue of the plants collected at Madeira, Brazil, Tierra del Fuego and the Society Islands*. References to Linnean names and works (mostly to *Species Plantarum* or *Mantissa*) were also found on the original labels of several of the studied specimens. When our contribution was submitted, BM was shut because of the coronavirus pandemic. Therefore we could not double check herbarium specimens for entries 52 and 202; we have tentatively assigned them to *Plantago major* and *Sida spinosa*, respectively.

[Page 1]

Plants of Madeira

N.B. the mark of a start * in the margin signifies that the plant so marked is not wild but cultivated a cross + that for want of firmely =ication [identification] the plant could not certainly be determind [determined]

MONANDRIA

- =1.- *Canna indica* Linn. Bananeira brava. Conteira preta. [*Canna indica* L. (Cannaceae)]; **Intr.;** **Herb.:** GH; **Other lists:** NPL, SOL; **Notes:** Not revised for Flora of Madeira.
- =2.- **Amomun Zingiber* Linn. [*Zingiber officinale* Roscoe (Zingiberaeae)]; **Cult.;** **Herb.:** GH; **Other lists:** NPL, SOL; **Notes:** "ex Hort" on sheet back.
- =3.- *Callitriche verna* Linn. [*Callitriche stagnalis* Scop. (Plantaginaceae)]; **Nat.;** **Other lists:** SOL.

DIANDRIA

- =4.- **Nyctanthes sambac* Linn. Flore pleno. [*Jasminum sambac* (L.) Aiton (Oleaceae)]; **Cult.;** **Herb.:** GH; **Other lists:** NPL, SOL; **Notes:** Not revised for Flora of Madeira.
- =5.- **Jasminum officinale* Linn. [*Jasminum officinale* L. (Oleaceae)]; **Cult.;** **Other lists:** SOL.



- =6.- *Jasminum grandiflorum* Linn. [*Jasminum grandiflorum* L. (Oleaceae)]; **Cult.;**
Other lists: SOL.
- =7.- +*Olea europea* Linn. [*Olea maderensis* (Lowe) Rivas Mart. & del Arco (Oleaceae)]; **Mad.;** **Herb.:** GH; **Other lists:** SOL; **Notes:** Revised by Lowe.
- =8.- *Veronica anagallis* ∇ Linn. [*Veronica anagallis-aquatica* L. (Scrophulariaceae)];
Nat.; **Herb.:** GH; **Other lists:** NPL, SOL.
- =9.- *Verbena officinalis* Linn. [*Verbena officinalis* L. (Verbenaceae)]; **Intr.;** **Other lists:** NPL, SOL.
- =10.- **Rosmarinus officinalis* Linn. [*Rosmarinus officinalis* L. (Lamiaceae)]; **Cult.;**
Other lists: SOL.
- =11.- **Salvia officinalis* Linn. [*Salvia officinalis* L. (Lamiaceae)]; **Cult.;** **Other lists:** SOL.

TRIANDRIA

- =12.- *Gladiolus communis* Linn. Alho brabo. [*Gladiolus cf. italicus* Mill. (Iridaceae)];
Intr.; **Herb.:** GH; **Other lists:** NPL, SOL.
- =13.- *Iris* [*Iris* sp. (Iridaceae)]; **Intr. and Cult.;** **Other lists:** SOL.
- =14.- *Cyperus rotundus* Linn. [*Cyperus rotundus* L. (Cyperaceae)]; **Intr.;** **Other lists:** NPL, SOL.
- =15.- *Cyperus flavescens* Linn. [*Pycreus flavescens* (L.) Rchb. (Cyperaceae)]; **Nat.;**
Herb.: SCV; **Other lists:** NPL, SOL.
- =16.- *Scirpus setaceus* Linn. [*Isolepis setacea* (L.) R.Br. (Cyperaceae)]; **Nat.;** **Herb.:**
 GH (BM000829271), SCV; **Other lists:** NPL, SOL.
- =17.- **Saccharum officinarum* Linn. [*Saccharum officinarum* L. (Poaceae)]; **Cult.;**
Other lists: SOL.
- =18.- *Phalaris canariensis* Linn. [*Phalaris canariensis* L. (Poaceae)]; **Nat.;** **Other lists:** NPL, SOL.
- =19.- *Phalaris oblongata* Mss. [*Phalaris coerulescens* Desf. (Poaceae)]; **Nat.;** **Herb.:**
 GH; **Other lists:** NPL, SOL; **Notes:** Determined by T.A. Cope, 18.V.1989.
- =20.- *Panicum Junceum* Mscr. [crossed] Grama [*Panicum repens* L. (Poaceae)];
Nat.; **Herb.:** GH, SCV; **Other lists:** NPL, SOL; **Notes:** Not revised for Flora of Madeira.

[Page] 2

Plants of Madeira

- =21.- *Panicum glaucum* Linn. [*Pennisetum glaucum* (L.) R.Br. (Poaceae)]; **Intr.;**
Herb.: SCV; **Other lists:** NPL, SOL.
- =22.- *Panicum sanguinale* Linn. [*Digitaria sanguinalis* (L.) Scop. (Poaceae)]; **Intr.;**
Herb.: GH, SCV; **Other lists:** NPL, SOL; **Notes:** Confirmed by T.A. Cope 18.V.1989, for Flora of Madeira.
- Panicum glaucum* Linn. [crossed]
- =23.- ----- Cruz Corvi Linn. Milhoa Lus. [*Echinochloa colona* (L.) Link (Poaceae)]; **Intr.;** **Herb.:** GH, SCV; **Other lists:** NPL, SOL; **Notes:** Confirmed by T.A. Cope, 18.V.1982 included in the sheet there is another specimen determined as *Echinochloa crus-galli* (L.) P. Beauv.



- =24.- *Milium paradoxum* Linn. [*Oryzopsis miliacea* (L.) Asch. & Schweinf. (Poaceae)]; **Nat.;** **Herb.:** SCV; **Other lists:** NPL, SOL; **Notes:** This species is listed as *Piptatherum miliaceum* (L.) Coss. subsp. *miliaceum* by Menezes de Sequeira *et al.* (2012).
- =25.- *Agrostis linearis* Mscr. [*Agrostis* sp. (Poaceae)]; **Other lists:** NPL, SOL.
- =26.- ----- *bromoides* Linn. [*Vulpia bromoides* (L.) Gray (Poaceae)]; **Nat.;** **Herb.:** GH; **Other lists:** NPL, SOL; **Notes:** “In apricis Mantissa 30” in the original label. Confirmed by T.A. Cope, 21.VII.1989.
- =27.- ----- *sanguinalis* Mscr. [*Digitaria ciliaris* (Retz.) Koeler. (Poaceae)]; **Intr.;** **Herb.:** GH, SCV; **Other lists:** NPL, SOL.
- =28.- ----- *pallida* Mscr. [*Gastridium ventricosum* (Gouan) Schinz & Thell. (Poaceae)]; **Nat.;** **Herb.:** SCV; **Other lists:** NPL, SOL.
- =29.- ----- *sylvatica* Linn. [*Polypogon viridis* (Gouan) Breist. (Poaceae)]; **Nat.;** **Other lists:** NPL, SOL.
- =30.- *Poa annua* Linn. [*Poa annua* L. (Poaceae)]; **Nat.;** **Herb.:** GH, SCV; **Other lists:** NPL, SOL; **Notes:** Confirmed by T.A. Cope, 21.VII.1989.
- =31.- *Briza minor* Linn. [*Briza minor* L. (Poaceae)]; **Nat.;** **Herb.:** GH, SCV; **Other lists:** NPL, SOL; **Notes:** Revised by T.A. Cope, 21.VII.1989, for Flora of Madeira.
- =32.- ----- *maxima* Linn. Xucalheira Lus. [*Briza maxima* L. (Poaceae)]; **Nat.;** **Herb.:** GH, SCV; **Other lists:** NPL, SOL; **Notes:** Revised by T.A. Cope, 21.VII.1989, for Flora of Madeira.
- =33.- *Cynosurus indicus* Linn. [*Eleusine indica* (L.) Gaertn. (Poaceae)]; **Intr.;** **Herb.:** GH, SCV; **Other lists:** NPL, SOL; **Notes:** Confirmed by T.A. Cope, 7.XII.1988.
- =34.- ----- *echinatus* Linn. [*Cynosurus echinatus* L. (Poaceae)]; **Nat.;** **Herb.:** GH, SCV; **Other lists:** NPL, SOL; **Notes:** Not revised for Flora of Madeira.
- =35.- *Festuca sylvatica* Mscr. *Bromus pinnatus* Linn. [*Brachypodium sylvaticum* (Huds.) P.Beauv. (Poaceae)]; **Nat.;** **Herb.:** GH; **Other lists:** NPL, SOL; **Notes:** Confirmed by T. A. Cope, 8.X.1988, for Flora of Madeira.
- =36.- *Bromus geniculatus* Linn. [*Bromus madritensis* L. (Poaceae)]; **Nat.;** **Herb.:** GH; **Other lists:** NPL, SOL; **Notes:** Revised by T.A. Cope, 8.X.1988, for Flora of Madeira.
- =37.- *Avena fatua* Linn. Balanco Lus. [*Avena barbata* Pott ex Link (Poaceae)]; **Nat.;** **Herb.:** GH; **Other lists:** NPL, SOL; **Notes:** Confirmed by T.A. Cope, 13.IV.1989, for Flora of Madeira.
- =38.- ----- *elatior* Linn. [*Arrhenatherum elatius* (L.) J.Presl & C. Presl subsp. *bulbosum* (Willd.) Schübl. & G. Martens (Poaceae)]; **Nat.;** **Other lists:** NPL, SOL.
- =39.- ----- *nodosa* Linn. [*Arrhenatherum elatius* (L.) J.Presl & C.Presl subsp. *bulbosum* (Willd.) Schübl. & G. Martens (Poaceae)]; **Nat.;** **Other lists:** SOL.
- =40.- *Arundo donax* Linn. Canavieira Lus. [*Arundo donax* L. (Poaceae)]; **Intr.;** **Other lists:** NPL, SOL.
- =41.- *Aristida Adscensionis* Linn. [*Aristida adscensionis* L. (Poaceae)]; **Nat.;** **Herb.:** GH, SCV; **Other lists:** NPL, SOL; **Notes:** Not revised for Flora of Madeira.



- =42.- *Lolium perenne* Linn. [*Lolium perenne* L. (Poaceae)]; **Intr.;** **Herb.:** GH; **Other lists:** NPL, SOL; **Notes:** Not revised for Flora of Madeira.
- =43.- ----- *temulentum* Linn. [*Lolium temulentum* L. (Poaceae)]; **Intr.;** **Herb.:** GH; **Other lists:** NPL, SOL; **Notes:** Not revised for Flora of Madeira.
- =44.- *Hordeum murinum* Linn. [*Hordeum murinum* L. subsp. *glaucum* (Steudel) Tzvelev (Poaceae)]; **Nat.;** **Herb.:** GH (BM000060788); **Other lists:** NPL, SOL; **Notes:** Determined by T.A. Cope, 8.X.1988.
- =45.- *Triticum repens* Linn. Forocapa Lus. [*Elymus repens* (L.) Gould (Poaceae)]; **Intr.;** **Other lists:** NPL, SOL.
- =46.- *Polycarpon tetraphyllum* Linn. Saboira Lus. [*Polycarpon tetraphyllum* (L.) L. (Caryophyllaceae)]; **Nat.;** **Herb.:** GH, SCV; **Other lists:** NPL, SOL; **Notes:** Not revised for Flora of Madeira.

[Page] 3

Plants of Madeira

TETRANDRIA

- =47.- *Alypum angustifolium* Fig. pict. Mscr. Malforada Lus. [*Globularia salicina* Lam. (Globulariaceae)]; **Mac.;** **Herb.:** GH (BM000999098, BM000999099), SCV; **Other lists:** NPL, SOL; **Notes:** Listed as “*Alypum longifolium* Mscr.” in NPL and SOL. Not revised for Flora of Madeira.
- =48.- *Sherardia arvensis* Linn. [*Sherardia arvensis* L. (Rubiaceae)]; **Nat.;** **Herb.:** GH; **Other lists:** NPL, SOL; **Notes:** Not revised for Flora of Madeira.
- =49.- *Galium mollugo* Linn. var. *angustifolia* [*Galium productum* Lowe (Rubiaceae)]; **Mad.;** **Herb.:** GH (BM000829004, BM000829002), SCV; **Other lists:** NPL, SOL; **Notes:** The original label states: “in Madera locus saxocis prope rivulos”. The General Herbarium sheet also includes two fragments of *G. parisiense* L. (BM000829003). Determined by N.J. Turland, VI.1993.
- =50.- ----- *vesiculosum* Mscr. [*Galium verrucosum* Huds. (Rubiaceae)]; **Nat.;** **Herb.:** GH (BM000829036); **Other lists:** NPL, SOL; **Notes:** Determined by N.J. Turland, VI.1993.
- =51.- *Plantago lanceolata* Linn. [*Plantago lagopus* L. (Plantaginaceae)]; **Nat.;** **Herb.:** GH; **Other lists:** NPL, SOL; **Notes:** Determined by J.R. Press, VIII.1997, for Flora of Madeira.
- =52.- ----- *media* Linn. Tanxage Lus. [*Plantago major* L. (Plantaginaceae)]; **Intr.;** **Herb.:** GH; **Other lists:** NPL, SOL.
- =53.- ----- *albicans* Linn. [*Plantago lagopus* L. and *P. lanceolata* L. (Plantaginaceae)]; **Intr.;** **Herb.:** GH; **Other lists:** NPL, SOL; **Notes:** According to J.R. Press the sheet includes one specimen of *Plantago lanceolata* L. and another one of *P. lagopus* L., determined on VIII.1991.
- =54.- *Eleagnus angustifolia* Linn. Oleveira Lus. [*Olea maderensis* (Lowe) Rivas Mart. & del Arco (Oleaceae)]; **Mad.;** **Herb.:** GH; **Other lists:** NPL, SOL; **Notes:** Not revised for Flora of Madeira.
- =55.- *Ilex Perado* Mss. Perado Lus. fig. pict. [*Ilex perado* Aiton subsp. *perado* (Aquifoliaceae)]; **Mad.;** **Herb.:** GH (BM000536466), SCV; **Other lists:** NPL, SOL; **Notes:** Not revised for Flora of Madeira.



- =56.- + ----- Azevinho Mss. Azevinho Lus. fig. pict. [*Ilex canariensis* Poir. (Aquifoliaceae)]; **Mac.;** **Herb.:** SCV; **Other lists:** NPL, SOL; **Notes:** Not revised for Flora of Madeira.
- =57.- *Sagina procumbens* Linn. [*Sagina procumbens* L. (Caryophyllaceae)]; **Nat.;** **Herb.:** GH (BM000072032); **Other lists:** NPL, SOL; **Notes:** Determined by M.J. West, I.1992.

PENTANDRIA

- =58.- *Heliotropium europaeum* Linn. [*Heliotropium europaeum* L. (Boraginaceae)]; **Nat.;** **Herb.:** GH; **Other lists:** NPL, SOL; **Notes:** Not revised for Flora of Madeira.
- =59.- *Myosotis scorpioides palustris* Linn. [*Myosotis secunda* Al. Murray (Boraginaceae)]; **Nat.;** **Herb.:** GH; **Other lists:** NPL, SOL; **Notes:** Determined by M.J. West, II.1991.
- =60.- ----- *arvensis* Linn. [*Myosotis arvensis* (L.) Hill (Boraginaceae)]; **Nat.;** **Other lists:** NPL, SOL.
- =61.- *Cynoglossum cheirifolium* Linn. Masarogueira Lus. [*Cynoglossum creticum* Mill. (Boraginaceae)]; **Nat.;** **Other lists:** NPL, SOL; **Notes:** Not revised for Flora of Madeira.
- =62.- ----- *officinale* Linn. [*Cynoglossum creticum* Mill. (Boraginaceae)]; **Nat.;** **Herb.:** GH; **Other lists:** NPL, SOL; **Notes:** Not revised for Flora of Madeira.
- =63.- *Echium vulgare* Linn. [*Echium plantagineum* L. (Boraginaceae)]; **Intr.;** **Herb.:** GH; **Other lists:** NPL, SOL.
- =64.- *Anagallis arvensis* Linn. [*Anagallis arvensis* L. (Primulaceae)]; **Nat.;** **Herb.:** GH; **Other lists:** NPL, SOL; **Notes:** Not revised for Flora of Madeira.
- =65.- *Convolvulus flexuosus* Mss. [*Convolvulus althaeoides* L. (Convolvulaceae)]; **Nat.;** **Herb.:** GH; **Other lists:** NPL, SOL; **Notes:** Examined by Lowe. Not revised for Flora of Madeira.
- =66.- *----- *Batatas* Linn. *Batata* Lus. [*Ipomoea batatas* (L.) Lam. (Convolvulaceae)]; **Cult.;** **Other lists:** NPL, SOL.
- =67.- ----- *arvensis* Linn. *corriola* Lus. [*Convolvulus arvensis* L. (Convolvulaceae)]; **Nat.;** **Herb.:** GH; **Other lists:** NPL, SOL; **Notes:** Not revised for Flora of Madeira.
- =68.- ----- *althaeoides* Linn. [*Convolvulus althaeoides* L. (Convolvulaceae)]; **Nat.;** **Herb.:** GH; **Other lists:** NPL, SOL; **Notes:** Not revised for Flora of Madeira.
- =69.- *Campanula erinus* Linn. [*Campanula erinus* L. (Campanulaceae)]; **Nat.;** **Other lists:** SOL; **Notes:** Not revised for Flora of Madeira.
- =70.- *Lonicera caprifolium* Linn. [*Lonicera caprifolium* L. (Caprifoliaceae)]; **Cult.;** **Other lists:** NPL, SOL.
- =71.- *Mirabilis Jalapa* Linn. *Boninas* Lus. [*Mirabilis jalapa* L. (Nyctaginaceae)]; **Intr.;** **Herb.:** GH; **Other lists:** NPL, SOL; **Notes:** Determined by J.R. Press, VII.1987, for Flora of Madeira.
- =72.- *Datura Stramonium* Linn. *Bufareira* Lus. [*Datura stramonium* L. (Solanaceae)]; **Intr.;** **Other lists:** NPL, SOL.



- =73.- *Hyoscyamus albus* Linn. Maimiendro Lus. [*Hyoscyamus albus* L. (Solanaceae)]; **Nat.; Other lists:** NPL, SOL.
- =74.- *Nicotiana Tabacum* Linn. Erva santa Lus. [*Nicotiana tabacum* L. (Solanaceae)]; **Intr.; Herb.:** GH (BM000940645); **Other lists:** NPL, SOL; **Notes:** Not revised for Flora of Madeira.
- =75.- **Solanum tuberosum* Linn. [*Solanum tuberosum* L. (Solanaceae)]; **Cult.; Other lists:** SOL.
- =76.- ----- *nigrum* Linn. [*Solanum americanum* Mill. (Solanaceae)]; **Nat.; Herb.:** GH; **Other lists:** NPL, SOL; **Notes:** Determinated by Sandra Knapp, 2008.
- =77.- ----- *pseudocapsicum* Linn. Pimenteira Lus. [*Solanum pseudocapsicum* L. (Solanaceae)]; **Intr.; Other lists:** NPL, SOL.
- =78.- ----- *Lycopersicum* Linn. Tomatos Lus. [*Lycopersicon esculentum* Mill. (Solanaceae)]; **Intr.; Herb.:** GH; **Other lists:** NPL, SOL.
- =79.- *Capsicum frutescens* α Linn. [*Capsicum annuum* L. (Solanaceae)]; **Cult.; Herb.:** GH; **Other lists:** NPL, SOL; **Notes:** Determined by J.M. Eylmons, 16.II.2005.
- =80.- *Heberdenia excelsa* Mscr. Aderno Lus. fig. pict. [*Heberdenia bahamensis* (Gaertn.) Sprague (Primulaceae)]; **Mac.; Herb.:** GH, SCV; **Other lists:** NPL, SOL; **Notes:** Not revised for Flora of Madeira.
- =81.- *Lycium barbarum* Linn. Espinheiro Lus. [*Lycium europaeum* L. (Solanaceae)]; **Nat.; Herb.:** GH (BM001019044); **Other lists:** NPL, SOL; **Notes:** Not revised for Flora of Madeira.
- =82.- **Mangifera indica* Linn. Mangoira Lus. [*Mangifera indica* L. (Anacardiaceae)]; **Cult.; Other lists:** NPL, SOL.
- =83.- **Ribes rubrum* Linn. [*Ribes rubrum* L. (Grossulariaceae)]; **Cult.; Other lists:** SOL.
- =84.- *----- *grossularia* Linn. [*Ribes grossularia* L. (Grossulariaceae)]; **Cult.; Other lists:** NPL, SOL.
- =85.- *Hedera helix* Linn. [*Hedera maderensis* K. Koch ex A.Rutherf. (Araliaceae)]; **Mad.; Other lists:** NPL, SOL.
- =86.- **Vitis vinifera* Linn. [*Vitis vinifera* L. (Vitaceae)]; **Intr.; Other lists:** NPL, SOL.
- =87.- *Achyranthes aspera* Sicula Linn. [*Achyranthes sicula* (L.) All. (Amaranthaceae)]; **Nat.; Herb.:** GH, SCV; **Other lists:** NPL, SOL; **Notes:** Not revised for Flora of Madeira.
- =88.- **Celosia cristata* Linn. [*Celosia argentea* L. (Amaranthaceae)]; **Cult.; Other lists:** SOL.
- =89.- **Gardenia florida* Linn. [*Gardenia jasminoides* J. Ellis (Rubiaceae)]; **Cult.**
- =90.- *Chenopodium murale* Linn. [*Chenopodium murale* L. (Chenopodiaceae)]; **Nat.; Herb.:** GH; **Other lists:** NPL, SOL; **Notes:** Determined by J.R. Press, 3.VIII.1987, for Flora of Madeira.
- =91.- ----- *album* Linn. [*Chenopodium album* L. (Chenopodiaceae)]; **Nat.; Herb.:** SCV; **Other lists:** NPL, SOL.



- =92.- ----- ambrosioides Linn. [*Chenopodium ambrosioides* L. (Chenopodiaceae)]; **Nat.; Herb.:** GH; **Other lists:** NPL, SOL; **Notes:** Confirmed by J.R. Press, 4.VIII.1987, for Flora of Madeira.
- =93.- *Caucalis arvensis* Mss. [*Torilis arvensis* (Huds.) Link subsp. *neglecta* (Spreng.) Thell. (Apiaceae)]; **Nat.; Herb.:** GH; **Other lists:** NPL, SOL; **Notes:** Determinated by M. J. Cannon, 1989.
- =94.- *Daucus visnaga* Linn. *Bisnaga* Lus. [*Ammi visnaga* (L.) Lam. (Apiaceae)]; **Nat.; Herb.:** GH, SCV; **Other lists:** NPL, SOL; **Notes:** Determinated by M.J. Cannon, 1989.
- =95.- *Ammi majus* Linn. *Margaca* Lus. [*Ammi majus* L. (Apiaceae)]; **Nat.; Other lists:** NPL, SOL.
- =96.- *Sium nodiflorum?* Linn. *Rabassa* Lus. [*Apium nodiflorum* (L.) Lag. (Apiaceae)]; **Intr.; Herb.:** GH; **Other lists:** NPL, SOL; **Notes:** Not revised for Flora of Madeira.
- =97.- *Anethum Foeniculum* Linn. *Funcho* Lus. [*Foeniculum vulgare* Mill. (Apiaceae)]; **Nat.; Other lists:** NPL, SOL.
- =98.- *Apium petroselinum* Linn. [*Petroselinum crispum* (Mill.) Fuss (Apiaceae)]; **Intr.; Herb.:** GH; **Other lists:** NPL, SOL; **Notes:** Not revised for Flora of Madeira.
- =99.- *Rhus coriaria* Linn. *Sumagre* Lus. [*Rhus coriaria* L. (Anacardiaceae)]; **Intr.; Herb.:** GH; **Other lists:** NPL, SOL; **Notes:** Not revised for Flora of Madeira.
- =100.- *Sambucus ebulus* Linn. [*Sambucus ebulus* L. (Caprifoliaceae)]; **Intr.; Other lists:** SOL.
- =101.- *Alsine media* Linn. [*Stellaria media* (L.) Vill. (Caryophyllaceae)]; **Nat.; Herb.:** GH; **Other lists:** NPL, SOL.
- =102.- *Linum perenne* Linn. [*Linum bienne* Mill. (Linaceae)]; **Nat.; Herb.:** GH (BM000056186), SCV; **Other lists:** NPL, SOL; **Notes:** Determinated by M.J. Short, I.1988, for Flora of Madeira.

[Page] 5

Plants of Madeira

HEXANDRIA

- =103.- **Bromelia Ananas* Linn. [*Ananas comosus* (L.) Merr. (Bromeliaceae)]; **Cult.; Other lists:** SOL.
- =104.- *Amaryllis belladonna* Linn. [*Amaryllis belladonna* L. (Amaryllidaceae)]; **Intr.; Com.; Other lists:** SOL.
- =105.- *Allium oleraceum* Linn. *Sabolinho bracco* Lus. [*Allium dentiferum* Webb & Berthel. (Alliaceae)]; **Nat.; Herb.:** GH; **Other lists:** NPL, SOL; **Notes:** Determined by A. Seregrin, 4.VIII.2003. According to Brullo *et al.* (2009) the species is present at Madeira.
- =106.- *----- *cepa* Linn. [*Allium cepa* L. (Alliaceae)]; **Cult.; Other lists:** SOL.
- =107.- *Lilium candidum* Linn. [*Lilium candidum* L. (Liliaceae)]; **Cult.; Other lists:** SOL.
- =108.- *Dracaena Draco* Linn. [*Dracaena draco* (L.) L. (Asparagaceae)]; **Mac.; Other lists:** SOL.



- =109.- *Aloe perfoliata* Linn. [*Aloe vera* (L.) Burm.f. (Aloaceae)]; **Intr.;** **Other lists:** NPL, SOL.
- =110.- **Agave Americana* Linn. [*Agave americana* L. (Agavaceae)]; **Intr.;** **Other lists:** NPL, SOL.
- =111.- *Juncus Effusus* Linn. [*Juncus effusus* L. (Juncaceae)]; **Nat.;** **Herb.:** GH, SCV; **Other lists:** NPL, SOL; **Notes:** Not revised for Flora of Madeira.
- =112.- ----- *tenax* Mscr. [*Juncus inflexus* L. (Juncaceae)]; **Nat.;** **Herb.:** GH (BM001042040); **Other lists:** NPL, SOL; **Notes:** Determined by Sven Snogerup, 1973.
- =113.- *Meadia repens* Mscr. Erva branca. Erva terra. Lus. fig. pict. [*Sibthorpia peregrina* L. (Scrophulariaceae)]; **Mad.;** **Herb.:** GH, SCV; **Other lists:** NPL, SOL; **Notes:** Not revised for Flora of Madeira.
- =114.- *Rumex aquaticus* Linn. azeda Lus. [*Rumex conglomeratus* Murray (Polygonaceae)]; **Intr.;** **Herb.:** GH (BM00056218); **Other lists:** NPL, SOL; **Notes:** Determined without indication of author.
- =115.- ----- *scutatus* Linn. Labassa Lus. [*Rumex maderensis* Lowe (Polygonaceae)]; **Mac.;** **Herb.:** SCV; **Other lists:** NPL, SOL.
- =116.- *Mermulano* Heb. Mss. [*Sideroxylon mirmulans* R.Br. (Sapotaceae)]; **Mad.;** **Herb.:** GH (BM0004398, BM000030980, BM000030981), SCV; **Other lists:** NPL, SOL; **Notes:** One of the sheets have the original label: "Mirmulano, Conf.: Heberden". Revised by T. Leyens & W. Lobin, VI.1994.

OCTANDRIA

- =117.- *Tropaeolum minus* Linn. [*Tropaeolum majus* L. (Tropaeolaceae)]; **Cult.;** **Herb.:** GH; **Other lists:** NPL, SOL; **Notes:** Not revised for Flora of Madeira.
- =118.- *Vaccinium elevatum* Mss. Uveira Lus. [*Vaccinium padifolium* Sm. (Ericaceae)]; **Mad.;** **Herb.:** GH (BM000829320); SCV; **Other lists:** NPL; **Notes:** Listed as "*Vaccinium exaltatum* Mscr." in NPL and SOL. A specimen of this species was located inside the Drying Book (Madeira III bundle), see Fig. 7.
- =119.- *Erica cinerea*? Linn. [*Erica maderensis* (Benth.) Bornm. (Ericaceae)]; **Mad.;** **Other lists:** NPL, SOL.
- =120.- *Polygonum aviculare* Linn. Sempre noiva Lus. [*Polygonum aviculare* L. (Polygonaceae)]; **Nat.;** **Herb.:** SCV; **Other lists:** NPL, SOL.
- =121.- ----- *Hydropiper* Linn. Polgueira Lus. [*Persicaria hydropiper* (L.) Spach (Polygonaceae)]; **Nat.;** **Herb.:** GH, SCV; **Other lists:** NPL, SOL.
- =122.- ----- *Barbatum* Linn. [*Persicaria hydropiper* (L.) Spach (Polygonaceae)]; **Nat.;** **Herb.:** GH, SCV; **Other lists:** NPL, SOL; **Notes:** Determined by J.R. Press as *Polygonum hydropiper*, 1.I.1990.

ENNEANDRIA

- =123.- *Laurus nobilis* Linn. [*Laurus novocanariensis* Rivas Mart. et al. (Lauraceae)]; **Mac.;** **Herb.:** GH (BM000829064), SCV; **Other lists:** NPL, SOL.
- =124.- ----- *indica* Linn. [*Persea indica* (L.) Spreng. (Lauraceae)]; **Mac.;** **Herb.:** GH, SCV; **Other lists:** NPL, SOL; **Notes:** Not revised for Flora of Madeira.



- =125.- ----- nitida Mscr. fig. pict. [*Apollonias barbujana* (Cav.) Bornm. subsp. *barbujana* (Lauraceae)]; **Mac.; Herb.:** GH, SCV; **Other lists:** NPL, SOL; **Notes:** Determined by M.J. Short, II.94.
- =126.- ----- foetens Mscr. fig. pict. Til Lus. [*Ocotea foetens* (Aiton) Baill. (Lauraceae)]; **Mac.; Herb.:** GH, SCV; **Other lists:** NPL, SOL; **Notes:** Not revised for Flora of Madeira.
- =127.- *----- cinamomum Linn. [*Cinnamomum verum* J.Presl (Lauraceae)]; **Cult.;** **Other lists:** SOL.

[Page] 6

Plants of Madeira

DECANDRIA

- =128.- *Cassia bicapsularis* Linn. [*Senna bicapsularis* (L.) Roxb. (Fabaceae)]; **Cult.;** **Other lists:** NPL, SOL.
- =129.- *Ruta graveolens* Linn. Arruda Lus. [*Ruta chalepensis* L. (Rutaceae)]; **Intr.;** **Herb.:** GH (BM000083037); **Other lists:** NPL, SOL; **Notes:** Not revised for Flora of Madeira.
- =130.- *Clethra arborea* Mscr. Folhada Lus. fig. pict. [*Clethra arborea* Aiton (Clethraceae)]; **Mad.;** **Herb.:** GH (BM000829091, BM000829092, BM000829093), SCV; **Other lists:** NPL, SOL; **Notes:** Aprovavit J.R. Press, 1991.
- =131.- *Dianthus prolifer* Linn. [*Petrorhagia nanteuilli* (Burnat) P.W. Ball & Heywood (Caryophyllaceae)]; **Nat.;** **Herb.:** GH, SCV; **Other lists:** NPL, SOL.
- =132.- *----- *cariophyllus* Linn. [*Dianthus caryophyllus* L. (Caryophyllaceae)]; **Cult.;** **Other lists:** NPL, SOL.
- =133.- *Cucubalus Behen* Linn. Estralho Lus. [*Silene vulgaris* (Moench) Garcke subsp. *vulgaris* (Caryophyllaceae)]; **Nat.;** **Herb.:** SCV; **Other lists:** NPL, SOL.
- =134.- *Silene gallica* Linn. [*Silene gallica* L. (Caryophyllaceae)]; **Nat.;** **Herb.:** GH (BM000072059), SCV; **Other lists:** NPL, SOL; **Notes:** Not revised for Flora of Madeira.
- =135.- ----- *inaperta* Linn. [*Silene inaperta* L. (Caryophyllaceae)]; **Nat.;** **Herb.:** GH; **Other lists:** NPL, SOL; **Notes:** Not revised for Flora of Madeira.
- =136.- *Stellaria graminea* Linn. [*Stellaria alsine* Grimm (Caryophyllaceae)]; **Intr.;** **Herb.:** GH, SCV; **Other lists:** NPL, SOL; **Notes:** Not revised for Flora of Madeira.
- =137.- *Cotyledon umbilicus* ♀ Linn. [*Umbilicus rupestris* (Salisb.) Dandy (Crasulaceae)]; **Nat.;** **Herb.:** GH; **Other lists:** NPL, SOL; **Notes:** Not revised for Flora of Madeira.
- =138.- *Oxalis corniculata* Linn. Pedepassaro, Bolsa de pastor Lus. [*Oxalis corniculata* L. (Oxalidaceae)]; **Intr.;** **Herb.:** GH, SCV; **Other lists:** NPL, SOL; **Notes:** Determined by A. Lousteig, 1974, as var. *villosa* (M. Bieb.) Hohen.
- =139.- *Cerastium viscosum* Linn. [*Cerastium glomeratum* Thuill. (Caryophyllaceae)]; **Nat.;** **Other lists:** NPL, SOL.
- =140.- **Phytolacca decandra* Linn. [*Phytolacca americana* L. (Phytolaccaceae)]; **Intr.;** **Other lists:** SOL.



DODECANDRIA

- =141.- *Portulaca oleracea* Linn. Baldruegas Lus. [*Portulaca oleracea* L. subsp. *oleracea* (Portulacaceae)]; **Nat.;** **Herb.:** GH; **Other lists:** NPL, SOL; **Notes:** Revised by M.J. Short, VI.1990, for Flora of Madeira.
- =142.- *Lythrum Hyssopifolia* Linn. [*Lythrum hyssopifolia* L. (Lythraceae)]; **Nat.;** **Herb.:** GH, SCV; **Other lists:** NPL, SOL.
- =143.- *Agrimonia eupatoria* Linn. [*Agrimonia eupatoria* L. (Rosaceae)]; **Nat.;** **Herb.:** GH; **Other lists:** NPL, SOL; **Notes:** Not revised for Flora of Madeira.
- =144.- *Reseda luteola* Linn. [*Reseda luteola* L. (Resedaceae)]; **Intr.;** **Herb.:** GH; **Other lists:** NPL, SOL; **Notes:** species historically cultivated for dyeing. Not revised for Flora of Madeira.
- =145.- *Euphorbia peplus* Linn. [*Euphorbia peplus* L. (Euphorbiaceae)]; **Nat.;** **Herb.:** SCV; **Other lists:** NPL, SOL.
- =146.- ----- *verrucosa* Linn. Truivisco Lus. [*Euphorbia platyphyllos* L. (Euphorbiaceae)]; **Nat.;** **Herb.:** GH, SCV; **Other lists:** NPL, SOL; **Notes:** Revised by J.M. Short, 9.VII.1987, for Flora of Madeira.
- =147.- *Sempervivum arboreum* Linn. [*Aichryson divaricatum* (Aiton) Praeger (Crasulaceae)]; **Mad.;** **Other lists:** NPL, SOL; **Notes:** Revised by Lowe.

ICOSANDRIA

- =148.- *Cactus Ficus indica* Linn. [*Opuntia ficus-barbarica* A. Berger (Cactaceae)]; **Intr.;** **Other lists:** SOL.
- =149.- **Psidium pyrifera* Linn. [*Psidium guajava* L. (Myrtaceae)]; **Cult.;** **Other lists:** NPL, SOL.
- =150.- **Eugenia Jambos* Linn. [*Syzygium jambos* (L.) Alston (Myrtaceae)]; **Cult.;** **Herb.:** GH; **Other lists:** NPL, SOL; **Notes:** Determined by N.J. Turland, IV.1994.
- =151.- *Myrtus communis Lusitanica* Linn. Myrto Lus. [*Myrtus communis* L. subsp. *communis* (Myrtaceae)]; **Nat.;** **Other lists:** NPL, SOL.
- =152.- *----- *tarentina* Linn. [*Myrtus communis* L. subsp. *tarentina* (L.) Nyman (Myrtaceae)]; **Cult.;** **Other lists:** NPL, SOL.
- =153.- *----- *pulposa* Mss. [*Eugenia uniflora* L. (Myrtaceae)]; **Cult.;** **Herb.:** GH; **Other lists:** NPL, SOL; **Notes:** Listed as “*Eugenia pulposa* Mscr.” in NPL and SOL. Not revised for Flora of Madeira.

[Page] 7

Plants of Madeira

- =154.- *Punica granatum* Linn. [*Punica granatum* L. (Punicaceae)]; **Cult.;** **Other lists:** NPL, SOL.
- =155.- **Amygdalus persica* Linn. [*Prunus persica* (L.) Batsch (Rosaceae)]; **Cult.;** **Other lists:** SOL.
- =156.- **Prunus armeniaca* Linn. [*Prunus armeniaca* L. (Rosaceae)]; **Cult.;** **Other lists:** SOL.
- =157.- *----- *cerasus* Linn. [*Prunus cerasus* L. (Rosaceae)]; **Intr.;** **Other lists:** SOL.



- =158.- *----- domestica Linn. [*Prunus domestica* L. (Rosaceae)]; **Cult.;** **Other lists:** NPL, SOL.
- =159.- **Mespilus germanica* Linn. [*Mespilus germanica* L. (Rosaceae)]; **Cult.;** **Other lists:** SOL.
- =160.- **Pyrus communis* Linn. [*Pyrus communis* L. (Rosaceae)]; **Cult.;** **Other lists:** SOL.
- =161.- *----- *Malus* Linn. [*Malus pumila* Mill. (Rosaceae)]; **Cult.;** **Other lists:** SOL.
- =162.- *----- *Cydonia* Linn. [*Cydonia oblonga* Mill. (Rosaceae)]; **Cult.;** **Other lists:** SOL.
- =163.- **Rosa gallica* Linn. flore albo. [*Rosa gallica* L. (Rosaceae)]; **Cult.;** **Other lists:** NPL, SOL.
- =164.- *Rubus pedatus* Mss. Silva Lus. [*Rubus serrae* Solano (Rosaceae)]; **Mad.;** **Herb.:** GH (BM00099774); **Other lists:** NPL, SOL; **Notes:** Taxonomy follows Matzke Hajek *et al.* (2016). Determined by N.J. Turland, III.1993 as *R. grandifolius* Lowe.
- =165.- ----- fruticosus Linn. [*Rubus ulmifolius* Schott (Rosaceae)]; **Nat.;** **Herb.:** SCV; **Other lists:** NPL, SOL.
- =166.- **Fragaria vesca* Linn. [*Fragaria vesca* L. subsp. *vesca* (Rosaceae)]; **Nat.;** **Other lists:** NPL, SOL.
- =167.- *Potentilla reptans* Linn. [*Potentilla reptans* L. (Rosaceae)]; **Nat.;** **Herb.:** SCV; **Other lists:** NPL, SOL.

POLYANDRIA

- =168.- *Chelidonium majus* Linn. Seredonia/Celedonia Lus. [*Chelidonium majus* L. (Papaveraceae)]; **Nat.;** **Herb.:** GH; **Other lists:** SOL; **Notes:** Not revised for Flora of Madeira.
- =169.- *Delphinium consolida* Linn. [*Consolida ajacis* (L.) Schur (Ranunculaceae)]; **Intr.;** **Other lists:** SOL.
- =170.- *Nigella damascena* Linn. [*Nigella damascena* L. (Ranunculaceae)]; **Intr.;** **Other lists:** NPL, SOL.
- =171.- **Liriodendron tulipifera* Linn. [*Liriodendron tulipifera* L. (Magnoliaceae)]; **Cult.;** **Other lists:** SOL.
- =172.- *Ranunculus repens* Linn. Solda da terra. Lus. [*Ranunculus repens* L. (Ranunculaceae)]; **Nat.;** **Herb.:** GH, SCV; **Other lists:** NPL, SOL; **Notes:** Confirmed by J.R. Press, X.1986.

DIDYNAMIA

- =173.- *Lavandula pinnata* Mss. Criceta de gallo fig. pict. [*Lavandula pinnata* L.f. (Lamiaceae)]; **Mac.;** **Herb.:** GH (BM000829060); **Other lists:** NPL, SOL; **Notes:** Confirmed by J.R. Press, I.1994.
- =174.- *Sideritis canariensis* Linn. [*Sideritis candicans* Aiton (Lamiaceae)]; **Mad.;** **Other lists:** NPL, SOL; **Notes:** Listed as “*Sideritis candicans*” in SOL.



- =175.- *Mentha pulegium* Linn. Poejo Lus. [*Mentha pulegium* L. (Lamiaceae)]; **Nat.;**
Herb.: SCV; **Other lists:** NPL, SOL.
- =176.- ----- *rotundifolia* Linn. [*Mentha suaveolens* Ehrh. (Lamiaceae)]; **Nat.;**
Herb.: GH; **Other lists:** NPL, SOL; **Notes:** Determined by J.R. Press,
 X.1993, for Flora of Madeira.
- =177.- *Stachys arvensis* Linn. [*Stachys arvensis* (L.) L. (Lamiaceae)]; **Nat.;** **Herb.:**
 GH; **Other lists:** NPL, SOL; **Notes:** Confirmed by J.R. Press, 7.I.1992,
 for Flora of Madeira.
- =178.- *Ballota nigra* Linn. [*Ballota nigra* L. (Lamiaceae)]; **Nat.;** **Other lists:** NPL,
 SOL.
- =179.- *Clinopodium vulgare* Linn. [*Clinopodium vulgare* L. (Lamiaceae)]; **Nat.;**
Other lists: NPL, SOL.

[Page] 8

Plants of Madeira

- =180.- *Origanum creticum* Linn. Ouregas Lus. [*Origanum vulgare* L. subsp. *virens*
 (Hoffmanns. & Link) Ietsw. (Lamiaceae)]; **Nat.;** SCV; **Other lists:** NPL,
 SOL.
- =181.- **Thymus vulgaris* Linn. [*Thymus vulgaris* L. (Lamiaceae)]; **Cult.;** **Other**
lists: SOL.
- =182.- *Melissa calamintha* Linn. [*Calamintha nepeta* (L.) Savi subsp. *sylvatica*
 (Bromf.) R. Morales (Lamiaceae)]; **Nat.;** **Herb.:** GH (BM000778843), SCV;
Other lists: NPL, SOL; **Notes:** Revised by J.R. Press, I. 1992, for Flora of
 Madeira and determined as *C. sylvatica* subsp. *ascendens*.
- =183.- *Dracocephalum canariense* Linn. [*Cedronella canariensis* (L.) Webb & Ber-
 thel. (Lamiaceae)]; **Mac.;** **Herb.:** GH; **Other lists:** NPL, SOL; **Notes:** Not
 revised for Flora of Madeira.
- =184.- **Ocimum Basilicum* Linn. [*Ocimum basilicum* L. (Lamiaceae)]; **Cult.;**
Other lists: SOL.
- =185.- *Prunella vulgaris* Linn. [*Prunella vulgaris* L. (Lamiaceae)]; **Nat.;** **Other lists:**
 NPL, SOL.
- =186.- *Antirrhinum cordatum* Mss fig. pict. Orelhas de gato Lus. [*Kickxia elatine*
 (L.) Dumort. (Scrophulariaceae)]; **Nat.;** **Herb.:** GH, SCV; **Other lists:**
 NPL, SOL; **Notes:** Not revised for Flora of Madeira.
- =187.- *Scrophularia scorodonia* Linn. [*Scrophularia scorodonia* L. (Scrophularia-
 ceae)]; **Nat.;** GH, SCV; **Other lists:** NPL, SOL; **Notes:** Revised by Vilhem
 Dalgaard, 1979.
- =188.- *Digitalis purpurea* Linn. Tegeira Lus. [*Digitalis purpurea* L. (Scrophularia-
 ceae)]; **Nat.;** **Other lists:** NPL, SOL.
- =189.- **Bignonia radicans* Linn. [*Campsis radicans* (L.) Seem. (Bignoniaceae)]; **Cult.;**
Other lists: SOL.
- =190.- *Acanthus spinosus* Linn. [*Acanthus mollis* L. (Acanthaceae)]; **Intr.;** **Herb.:** GH;
Other lists: SOL; **Notes:** Revised for Flora of Madeira, M.J. Short, VI.1990.



TETRADYNAMIA

- =191.- **Lepidium sativum* Linn. [*Lepidium virginicum* L. (Brassicaceae)]; **Intr.;** **Herb.:** GH; **Other lists:** NPL, SOL; **Notes:** In the original label *sativum* is crossed and changed into *virginicum*. Revised by M.J. West, XI. 1990, for Flora of Madeira.
- =192.- *Cochlearia coronopus* Linn. [*Lepidium coronopus* (L.) Al-Shehbaz (Brassicaceae)]; **Intr.;** **Other lists:** NPL, SOL.
- =193.- *Sisymbrium Nasturtium* V. Linn. Agriao Lus. [*Rorippa nasturtium-aquaticum* (L.) Hayek (Brassicaceae)]; **Nat.;** **Herb.:** GH; **Other lists:** NPL, SOL; **Notes:** Revised by M.J. West, XII. 1990 for Flora of Madeira.
- =194.- *Erysimum officinale* Linn. [*Sisymbrium officinale* (L.) Scop. (Brassicaceae)]; **Nat.;** **Herb.:** GH; **Other lists:** NPL, SOL; **Notes:** Revised by M.J. Short, IX.1989, for Flora of Madeira.
- =195.- **Brassica oleracea* Linn. [*Brassica oleracea* L. (Brassicaceae)]; **Cult.;** **Other lists:** NPL, SOL.
- =196.- *----- *rapa* Linn. [*Brassica rapa* L. (Brassicaceae)]; **Cult.;** **Other lists:** SOL.
- =197.- **Sinapis alba* Linn. *mustarda* Lus. [*Sinapis arvensis* L. (Brassicaceae)]; **Cult.;** **Herb.:** GH (BM00056580); **Other lists:** NPL, SOL; **Notes:** Revised by Guy Baillargeon, 1983.
- =198.- *Isatis tinctoria* Linn. [*Isatis tinctoria* L. (Brassicaceae)]; **Intr.;** **Herb.:** GH; **Other lists:** NPL, SOL; **Notes:** Not revised for Flora of Madeira.

MONADELPHIA

- =199.- *Geranium robertianum* Linn. Agulheta Lus. [*Geranium robertianum* L. (Geraniaceae)]; **Nat.;** **Herb.:** GH; **Other lists:** NPL, SOL; **Notes:** Not revised for Flora of Madeira.
- =200.- ----- *cicutarium* Linn. [*Erodium moschatum* (L.) Aiton (Geraniaceae)]; **Nat.;** **Herb.:** GH; **Other lists:** NPL, SOL; **Notes:** Determined by M.J. West, VIII.1990.
- =201.- *Sida Rhombifolia* Linn. Bertonha Lus. [*Sida rhombifolia* L. (Malvaceae)]; **Intr.;** **Herb.:** SCV; **Other lists:** NPL, SOL.
- =202. ----- [*Sida spinosa* L. (Malvaceae)] **Intr.;** **Herb.:** SCV; **Other lists:** NPL, SOL.
- =203.- *Malva rotundifolia* Linn. Malva Lus. [*Malva sylvestris* L. (Malvaceae)]; **Nat.;** **Herb.:** GH, SCV; **Other lists:** NPL, SOL; **Notes:** Determined by J.R. Press, VI.1980.
- =204.- ----- *mauritanica* Linn. [*Malva sylvestris* L. (Malvaceae)]; **Nat.;** **Herb.:** GH; **Other lists:** NPL, SOL; **Notes:** Labeled as *Malva mauritiana* by B&S. Determined by J.R. Press, VII.1986.
- =205.- **Hibiscus rosa sinensis* Linn. [*Hibiscus rosa-sinensis* L. (Malvaceae)]; **Cult.;** **Other lists:** SOL.



DIADELPHIA

- =206.- *Fumaria officinalis* Linn. Molharinha Lus. [*Fumaria muralis* Sond. ex W.D.J. Koch subsp. *muralis* (Fumariaceae)]; **Nat.**; **Other lists:** NPL, SOL; **Notes:** Determined by J. Press, 8.X.1989, for Flora of Madeira.
- =207.- *Spartium scoparium* Linn. [*Cytisus scoparius* (L.) Link subsp. *scoparius* (Fabaceae)]; **Intr.**; GH (BM000056343); **Other lists:** NPL, SOL; **Notes:** Not revised for Flora of Madeira.
- =208.- *Genista canariensis* Linn. Piorno Lus. [*Genista tenera* (Murray) Kuntze (Fabaceae)]; **Mad.**; **Herb.:** GH; **Other lists:** NPL, SOL; **Notes:** *Genista canariensis* L. (accepted name *Teline canariensis* (L.) Webb & Berthel.), to which Banks referred this specimen, does not occur in Madeira but is morphologically similar.
- =209.- **Lupinus albus* Linn. [*Lupinus albus* L. subsp. *albus* (Fabaceae)]; **Cult.**; **Other lists:** SOL.
- =210.- **Phaseolus vulgaris* α Linn. [*Phaseolus vulgaris* L. (Fabaceae)]; **Cult.**; **Other lists:** SOL.
- =211.- *----- β *Phaseolus coccineus* Linn. [*Phaseolus coccineus* L. (Fabaceae)]; **Cult.**; **Other lists:** SOL.
- =212.- **Pisum sativum* Linn. [*Pisum sativum* L. (Fabaceae)]; **Cult.**; **Other lists:** SOL.
- =213.- *Vicia gracilis* Mss. [*Vicia articulata* Hornm. (Fabaceae)]; **Nat.**; **Herb.:** GH (BM000829338); **Other lists:** NPL, SOL; **Notes:** According to Lowe (1868) it refers to *Ervum pubescens* DC. (= *Vicia pubescens* (DC.) Link).
- =214.- *Ervum hirsutum* Linn. Ervilhata Lus. [*Vicia hirsuta* (L.) Gray (Fabaceae)]; **Nat.**; **Herb.:** GH; **Other lists:** NPL, SOL; **Notes:** Not revised for Flora of Madeira.
- =215.- *Cicer arietinum* Linn. [*Cicer arietinum* L. (Fabaceae)]; **Cult.**; **Herb.:** GH; **Other lists:** NPL, SOL.
- =216.- *Ornithopus perpusillus* Linn. [*Ornithopus pinnatus* (Mill.) Druce. (Fabaceae)]; **Nat.**; **Herb.:** GH, SCV; **Other lists:** NPL, SOL; **Notes:** Revised by N.J. Turland, X.1993.
- =217.- *Scorpiurus vermiculata* Linn. [*Scorpiurus vermiculatus* L. (Fabaceae)]; **Nat.**; **Other lists:** SOL.
- =218.- *Psoralea bituminosa* Linn. Fudigocos Lus. [*Bituminaria bituminosa* (L.) C.H. Stirton]; **Nat.**; **Herb.:** GH (BM000828994); **Other lists:** NPL, SOL; **Notes:** Not revised for Flora of Madeira.
- =219.- ----- *americana* Linn. [*Cullen americanum* (L.) Rydb. (Fabaceae)]; **Intr.**; **Herb.:** GH (BM000838996); **Other lists:** NPL, SOL; **Notes:** Not revised for Flora of Madeira.
- =220.- *Trifolium glomeratum* Linn. [*Trifolium glomeratum* L. (Fabaceae)]; **Nat.**; **Herb.:** GH; **Other lists:** NPL, SOL; **Notes:** Not revised for Flora of Madeira.
- =221.- *Trifolium agrarium* Linn. [*Trifolium dubium* Sibth. (Fabaceae)]; **Nat.**; **Herb.:** GH (BM000056746), SCV; **Other lists:** NPL, SOL; **Notes:** Determined by R.J. Press, II.1987, for Flora of Madeira.



- =222.- ----- repens Linn. [*Trifolium repens* L. (Fabaceae)]; **Nat.;** **Herb.:** GH, SCV; **Other lists:** NPL, SOL; **Notes:** Confirmed by J.R. Press, III.1987, for Flora of Madeira.
- =223.- ----- Melilotus Italica Linn. [*Melilotus elegans* Salzm. ex Ser. (Fabaceae)]; **Intr.;** **Other lists:** NPL, SOL.
- =224.- ----- angustifolium Linn. Pesegaja Lus. [*Trifolium angustifolium* L. (Fabaceae)]; **Nat.;** **Herb.:** GH (BM000829021), SCV; **Other lists:** NPL, SOL; **Notes:** Confirmed by R.J. Press, II.1987, for Flora of Madeira.
- =225.- Lotus glaucus Mscr. fig. pict. [*Lotus glaucus* Aiton (Fabaceae)]; **Mad.;** **Herb.:** GH (BM00050789), SCV; **Other lists:** NPL, SOL; **Notes:** Determined by J.H. Kirkbride Jr., 2006.
- =226.- Medicago polymorpha muricata Linn. [*Medicago polymorpha* L. (Fabaceae)]; **Nat.;** **Herb.:** GH, SCV; **Other lists:** NPL, SOL; **Notes:** Not revised for Flora of Madeira.
- =227.- ----- lupulina Linn. [*Medicago lupulina* L. (Fabaceae)]; **Nat.;** **Other lists:** NPL, SOL.

POLYADELPHIA

- =228.- *Citrus medica Linn. [*Citrus medica* L. (Rutaceae)]; **Cult.;** **Other lists:** SOL.
- =229.- ----- Aurantium Linn. [*Citrus x aurantium* L. (Rutaceae)]; **Cult.;** **Other lists:** SOL.
- =230.- Hypericum canariense Linn. Sepiao Lus. [*Hypericum canariense* L. (Hypericaceae)]; **Mac.;** **Herb.:** GH; **Other lists:** NPL, SOL; **Notes:** Determined by N.K.B. Robson, 1980.
- =231.- ----- perforatum Linn. peseguiero Lus. [*Hypericum perforatum* L. (Hypericaceae)]; **Nat.;** GH, SCV; **Other lists:** NPL, SOL; **Notes:** Determined by N.K.B. Robson as var. *veronense* (Scrank) H. Lindb., 1998.
- =232.- ----- humifusum Linn. [*Hypericum humifusum* L. (Hypericaceae)]; **Nat.;** **Herb.:** GH, SCV; **Other lists:** NPL, SOL; **Notes:** Determined by N.K.B. Robson, 2007.
- =233.- ----- glandulosum Mscr. [*Hypericum glandulosum* Aiton (Hypericaceae)]; **Mac.;** **Herb.:** GH (BM000617916); **Other lists:** NPL, SOL; **Notes:** Determined by N.K.B. Robson, 1996.
- =234.- ----- evectum Mscr. [*Hypericum grandifolium* Choisy (Hypericaceae)]; **Mac.;** **Herb.:** GH (BM000829215, BM0001024250); **Other lists:** NPL, SOL; **Notes:** Determined by N.K.B. Robson, 1981.

[Page] 10

Plants of Madera

SYNGENESIA

- =235.- Picris Echioides Linn. Rapasaya Lus. [*Helminthotheca echioides* (L.) Holub (Asteraceae)]; **Nat.;** **Herb.:** GH, SCV; **Other lists:** NPL, SOL; **Notes:** Determined by J.R. Press, V.1990, for Flora of Madeira.
- =236.- Sonchus oleraceus Linn. Peseguiro Lus. [*Sonchus asper* (L.) Hill (Asteraceae)]; **Nat.;** **Herb.:** SCV; **Other lists:** NPL, SOL.

- =237.-*Lactuca sativa* Linn. [*Lactuca sativa* L. (Asteraceae)]; **Cult.;** **Herb.:** GH; **Other lists:** NPL, SOL; **Notes:** Not revised for Flora of Madeira.
- =238.-*Leontodon nudicaule* Mss. Letubra Lus. [*Leontodon taraxacoides* (Vill.) Mé-
rat (Asteraceae)]; **Nat.;** **Herb.:** GH, SCV; **Other lists:** NPL, SOL; **Notes:**
Determined by J.R. Press, IV.1990.
- =239.-*Crepis tenuifolia* Mss. [*Tolpis succulenta* (Aiton) Lowe (Asteraceae)]; **Mac.;**
Herb.: GH, SCV; **Other lists:** NPL, SOL; **Notes:** Revised by C.E. Jarvis.
- =240.-*Lapsana stellata* Linn. [*Rhagadiolus stellatus* (L.) Gaertn. (Asteraceae)]; **Intr.;**
Herb.: GH; **Other lists:** NPL, SOL; **Notes:** Determined by P.D. Sell, 1972.
- =241.-*Cicoreum Intybus* Linn. [*Cichorium endivia* L. subsp. *divaricatum* (Schousb.)
P.D.Sell (Asteraceae)]; **Nat.;** **Herb.:** GH (BM000017576); **Other lists:**
NPL, SOL.
- =242.-*Scolymus hispanicus* Linn. [*Scolymus maculatus* L. (Asteraceae)]; **Nat.;** **Other**
lists: NPL, SOL.
- =243.-*Arctium Lappa* Linn. [*Arctium minus* (Hill.) Bernh. (Asteraceae)]; **Intr.;**
Other lists: SOL.
- =244.-*Carduus pycnocephalus* Linn. [*Galactites tomentosa* Moench (Asteraceae)];
Nat.; **Herb.:** SCV; **Other lists:** NPL, SOL; **Notes:** Specimen in SCV labeled
Carduus pycnocephalus corresponds to *Galactites tomentosa*. Not revised for
Flora of Madeira.
- =245.-*Carthamus tinctorius* Linn. Cardo brabo Lus. [*Carthamus tinctorius* L. (As-
teraceae)]; **Intr.;** **Other lists:** NPL, SOL.
- =246.-*Carthamus lanatus* Linn. [*Carthamus lanatus* L. subsp. *lanatus* (Asteraceae)];
Nat.; **Herb.:** GH; **Other lists:** NPL, SOL; **Notes:** Aprovavit J.R. Press, 1991.
- =247.-*Gnaphalium crassifolium* Mss [crossed] fig. pict. [*Helichrysum obconicum*
DC. (Asteraceae)]; **Mad.;** **Herb.:** GH (BM000829047, BM00829048),
SCV; **Other lists:** NPL, SOL; **Notes:** Determined by J.R. Press, IX.1994,
for Flora of Madeira.
- =248.- ----- *luteoalbum* Linn. [*Pseudognaphalium luteoalbum* (L.) Hilliard &
B.L. Burtt (Asteraceae)]; **Nat.;** **Herb.:** GH (BM000829049), SCV; **Other**
lists: NPL, SOL; **Notes:** Determined by J.R. Press, V.1991.
- =249.-*Conyza Saxatilis* Linn. Murnaneira Lus. [*Phagnalon saxatile* (L.) Cass.
(Asteraceae)]; **Herb.:** GH, SCV; **Nat.;** **Other lists:** NPL, SOL; **Notes:**
Determined by J.R. Press, I.1990.
- =250.-*Erigeron canadense* Linn. [*Conyza canadensis* (L.) Cronquist (Asteraceae)];
Intr.; **Herb.:** GH, SCV; **Other lists:** NPL, SOL; **Notes:** Determined by
J.R. Press, I.1990.
- =251.-*Senecio viscosus* Linn. [*Senecio lividus* L. (Asteraceae)]; **Nat.;** **Herb.:** GH
(BM000829050, BM000829051), SCV; **Other lists:** NPL, SOL; **Notes:**
Determined by J.W. Kadereit, 17.VIII.1982.
- =252.- **Aster chinensis* Linn. [*Callistephus chinensis* (L.) Nees. (Asteraceae)]; **Cult.;**
Other lists: SOL.
- =253.- **Tagetes erecta* Linn. [*Tagetes erecta* L. (Asteraceae)]; **Cult.;** **Other lists:** SOL.
- =254.-*Chrysanthemum segetum* Linn. [*Glebionis segetum* (L.) Fourr. (Asteraceae)];
Intr.; **Other lists:** SOL.



- =255.- *Matricaria parthenium* Linn. Artemigo Lus. [*Tanacetum parthenium* (L.) Sch.Bip. (Asteraceae)]; **Intr.; Herb.:** GH; **Other lists:** NPL, SOL; **Notes:** Determined by J.R. Press, 21.XI.1988, for Flora of Madeira.
- =256.- *Anthemis cotula* Linn. [*Anthemis cotula* L. (Asteraceae)]; **Intr.; Other lists:** NPL, SOL.
- =257.- **Helianthus annuus* Linn. [*Helianthus annuus* L. (Asteraceae)]; **Cult.; Other lists:** SOL.
- =258.- *Coreopsis Leucanthema* Linn. Malpica / Don Andrera Lus. [*Bidens pilosa* L. var. *radiata* (Sch.Bip.) Sherff (Asteraceae)]; **Intr.; Herb.:** GH, SCV; **Other lists:** NPL, SOL; **Notes:** Determined by T.G.J. Raynaer, 1983.
- =259.- *Centaurea calcitrapa* Linn. [*Centaurea calcitrapa* L. (Asteraceae)]; **Nat.; Herb.:** GH (BM000847062); **Other lists:** NPL, SOL; **Notes:** Determined by J.R. Press, III.1991.
- =260.- *Calendula arvensis* Linn. [*Calendula arvensis* L. (Asteraceae)]; **Nat.; Other lists:** NPL, SOL.
- =261.- *Lobelia Longifolia* Mscr. [*Legousia scabra* (Lowe) Gamisans (Campanulaceae)]; **Nat.; Herb.:** GH, SCV; **Other lists:** NPL, SOL.

[Page] 11

Plants of Madeira

- =262.- *Viola odorata* Linn. *Viola* Lus. [*Viola odorata* L. (Violaceae)]; **Nat.; Herb.:** GH, SCV; **Other lists:** NPL, SOL; **Notes:** Revised for Flora of Madeira by M.J. Short, II.1990.
- =263.- **Impatiens balsamina* Linn. [*Impatiens balsamina* L. (Balsaminaceae)]; **Intr.; Other lists:** SOL.

GYNANDRIA

- =264.- *Passiflora quadrangularis* Linn. [*Passiflora quadrangularis* L. (Passifloraceae)]; **Intr.; Other lists:** SOL; **Notes:** cultivated species with edible fruits.
- =265.- **Arum colocasia* Linn. Inhame Lus. [*Colocasia esculenta* (L.) Schott (Araceae)]; **Intr.;** GH; **Other lists:** NPL, SOL; **Notes:** Determined by E.W. Groves, VI.1972.
- =266.- ----- *sagittifolium* Linn. [*Arum italicum* Mill. subsp. *canariense* (Webb & Berthel.) P.C.Boyce (Araceae)]; **Mac.; Herb.:** GH; **Other lists:** NPL, SOL; **Notes:** Determined by N.J. Turland, XII.1993.
- =267.- ----- *pictum* Mss Inhame de Bresil Lus. fig. pict. [*Caladium picturatum* K. Koch & C.D. Bouché (Araceae)]; **Cult.; Herb.:** GH; **Other lists:** NPL, SOL.

MONOECIA

- =268.- *Lemna minor* Linn. [*Lemna minor* L. (Lemnaceae)]; **Nat.; Other lists:** SOL.
- =269.- *Zea Mays* Linn. [*Zea mays* L. (Poaceae)]; **Cult.; Other lists:** SOL.
- =270.- *Coix Lacryma Jobi* Linn. Conteyras brancas Lus. [*Coix lacryma-jobi* L. (Poaceae)]; **Cult.; Herb.:** GH, SCV; **Other lists:** NPL, SOL; **Notes:** Confirmed by T.A. Cope, 7.XI.1988.



- =271.- *Carex muricata* Linn. [*Carex divulsa* Stokes subsp. *divulsa* (Cyperaceae)]; **Nat.;** **Herb.:** GH; **Other lists:** NPL, SOL; **Notes:** Determined by Rene David, 15.IV.1993.
- =272.- **Buxus sempervirens* Linn. [*Buxus sempervirens* L. (Buxaceae)]; **Cult.;** **Other lists:** SOL.
- =273.- *Urtica urens* Linn. [*Urtica membranacea* Savigny (Urticaceae)]; **Nat.;** **Herb.:** GH (BM000072973); **Other lists:** NPL, SOL; **Notes:** Determined by J.R. Press, 24.II.1987, for Flora of Madeira.
- =274.- **Morus nigra* Linn. [*Morus nigra* L. (Moraceae)]; **Cult.;** **Other lists:** SOL.
- =275.- *Amaranthus hybridus* Linn. [*Amaranthus hybridus* L. (Amaranthaceae)]; **Intr.;** **Herb.:** SCV; **Other lists:** NPL, SOL.
- =276.- ----- *blitum* Linn. Bredos Lus. [*Amaranthus blitum* L. (Amaranthaceae)]; **Nat.;** **Herb.:** GH (BM000083055), SCV; **Other lists:** NPL, SOL; **Notes:** Not revised for Flora of Madeira.
- =277.- *Poterium sanguisorba* Linn. [*Sanguisorba verrucosa* (Link ex G.Don) Ces. (Rosaceae)]; **Nat.;** **Herb.:** GH (BM000035955); **Other lists:** NPL, SOL; **Notes:** Not revised for Flora of Madeira. This is a sterile specimen.
- =278.- *Juglans regia* Linn. [*Juglans regia* L. (Juglandaceae)]; **Cult.;** **Other lists:** SOL.
- =279.- *Fagus castanea* Linn. [*Castanea sativa* Mill. (Fagaceae)]; **Intr.;** **Other lists:** SOL.
- =280.- *Pinus pinea* Linn. Pinheira. [*Pinus pinaster* Aiton. (Pinaceae)]; **Intr.;** **Herb.:** GH; **Other lists:** NPL, SOL.
- =281.- **Cupressus sempervirens* Linn. [*Cupressus sempervirens* L. (Cupressaceae)]; **Cult.;** **Other lists:** SOL.
- =282.- **Cucurbita lagenaria* Linn. [*Lagenaria siceraria* (Molina) Standl. (Cucurbitaceae)]; **Cult.;** **Other lists:** SOL.
- =283.- *----- *pepo* Linn. [*Cucurbita pepo* L. (Cucurbitaceae)]; **Cult.;** **Other lists:** SOL.
- =284.- *----- *citrullus* Linn. [*Citrullus lanatus* (Thunb.) Matsum. & Nakai (Cucurbitaceae)]; **Cult.;** **Other lists:** SOL.
- =285.- **Cucumis Melo* Linn. [*Cucumis melo* L. (Cucurbitaceae)]; **Intr.;** **Other lists:** SOL.
- =286.- *----- *Sativus* Linn. [*Cucumis sativus* L. (Cucurbitaceae)]; **Intr.;** **Other lists:** SOL.

[Page] 12

Plants of Madera

DIOECIA

- =287.- *Salix purpurea* Linn. Vime Lus. [*Salix x rubens* Schrank (Salicaceae)]; **Cult.;** **Herb.:** GH, SCV; **Other lists:** NPL, SOL; **Notes:** Determined by R.J. Press, I.1991,
- =288.- ----- *Helix* Linn. Seiseiro Lus. [*Salix x rubens* Schrank (Salicaceae); vime, seixo]; **Cult.;** **Herb.:** GH; **Other lists:** NPL, SOL.
- =289.- *Smilax latifolia* Mss Alegacadela Lus. fig. pict. [*Smilax pendulina* Lowe (Smilacaceae)]; **Mad.;** **Herb.:** GH (BM001009926, BM001009927), SCV;



- Other lists:** NPL, SOL; **Notes:** Determined as *Smilax aspera* by A.R. Vickery, 6.X.1989.
- =290.- *Populus alba* Linn. Alamo Lus. [*Populus alba* L. (Salicaceae)]; **Intr.;** **Herb.:** GH, SCV; **Other lists:** NPL, SOL; **Notes:** Not revised for Flora of Madeira.
- =291.- *Mercurialis ambigua* Linn. [*Mercurialis annua* L. (Euphorbiaceae)]; **Nat.;** **Herb.:** GH, SCV; **Other lists:** NPL, SOL; **Notes:** Determined by J.R. Press, VII.1986, for Flora of Madeira.
- =292.- **Carica Papyra* Linn. [*Carica papaya* L. (Caricaceae)]; **Cult.;** **Other lists:** SOL.
- =293.- *Juniperus oxycedrus* Linn. [*Juniperus cedrus* Webb & Berthel. subsp. *maderensis* Rivas Mart. et al. (Cupressaceae)]; **Mad.;** **Herb.:** GH; **Other lists:** NPL, SOL; **Notes:** Determined by R.J. Press, II.1991.
- =294.- *Taxus baccata* Linn. [*Taxus baccata* L. (Taxaceae)]; **Nat.;** **Herb.:** GH; **Other lists:** NPL, SOL; **Notes:** Aprovavit R.J. Press, 1991.
- =295.- **Ruscus androgynus* Linn. Alegacam Lus. [*Semele androgyna* (L.) Kunth (Liliaceae)]; **Mac.;** **Herb.:** GH; **Other lists:** NPL, SOL; **Notes:** Determined by A.R. Vickery, 5.VI.1989.

POLYGAMIA

- =296.- *Musa sapientium* Linn. [*Musa acuminata* Colla (Musaceae)]; **Cult.;** **Other lists:** SOL.
- =297.- *Andropogon hirtum* Linn. [*Hyparrhenia hirta* (L.) Stapf (Poaceae)]; **Nat.;** **Herb.:** GH, SCV; **Other lists:** NPL, SOL; **Notes:** Determined by O.S.
- =298.- *Holcus halepensis* Linn. Scalracha Lus. [*Sorghum halepense* (L.) Pers. (Poaceae)]; **Intr.;** **Herb.:** GH, SCV; **Other lists:** NPL, SOL; **Notes:** Not revised for Flora of Madeira.
- =299.- ----- *mollis* Linn. [*Holcus lanatus* L. (Poaceae)]; **Intr.;** **Herb.:** GH (BM000643301), SCV; **Other lists:** NPL, SOL; **Notes:** In original label: "Madera locis saxosis prope Funchal 14 Sept.1768". Determined by T.A. Cope, 13.IV.1989.
- =300.- *Cenchrus setosus* Mscr. [*Cenchrus ciliaris* L. (Poaceae)]; **Intr.;** **Herb.:** GH, SCV; **Other lists:** NPL, SOL; **Notes:** Determined by T.A Cope, 18.V.1988, for Flora of Madeira.
- =301.- *Parietaria officinalis* Linn. Alfavaca Lus. [*Parietaria judaica* L. (Urticaceae)]; **Nat.;** **Herb.:** GH; **Other lists:** NPL, SOL; **Notes:** The sheet also appears to have a specimen of *P. officinalis* L. determined by J.R. Press which probably is not from Madeira.
- =302.- **Mimosa Farnesiana* Linn. [*Acacia farnesiana* (L.) Willd. (Fabaceae)]; **Intr.;** **Other lists:** SOL.
- =303.- **Diospyros Lotus* Linn. Fig. Fuit. [*Diospyros lotus* L. (Ebenaceae)]; **Cult.;** **Herb.:** SCV; **Other lists:** NPL, SOL.
- =304.- **Ficus carica* Linn. [*Ficus carica* L. (Moraceae)]; **Cult.;** **Other lists:** SOL.



CRYPTOGAMIA

- =305.- *Equisetum arvense* Linn. [*Equisetum arvense* L. (Equisetaceae)]; **Nat.; Herb.:** GH; **Other lists:** NPL, SOL.
- =306.- +*Osmunda Maderensis* Mscr. fig. pict. [*Pteris incompleta* Cav. (Pteridaceae)]; **Nat.; Herb.:** GH, SCV; **Other lists:** NPL, SOL; **Notes:** Revised for Flora of Madeira.
- =307.- ----- *spicant* Linn. [*Struthiopteris spicant* (L.) F.W.Weiss. (Blechnaceae)]; **Nat.; Herb.:** GH; **Other lists:** NPL, SOL; **Notes:** Revised for Flora of Madeira.
- =308.- *Pteris aquilina* Linn. Feiteira Lus. [*Pteridium aquilinum* (L.) Kuhn (Hypolepidaceae)]; **Nat.; Other lists:** NPL, SOL.
- =309.- *Asplenium adiantum nigrum* Linn. [*Asplenium adiantum-nigrum* L. (Aspleniaceae)]; **Nat.; Herb.:** SCV; **Other lists:** NPL, SOL.
- =310.- ----- *marinum* Linn. [*Asplenium marinum* L. (Aspleniaceae)]; **Nat.; Herb.:** SCV; **Other lists:** NPL, SOL.
- =311.- ----- *monanthes* Linn. fig. pict. [*Asplenium monanthes* L. (Aspleniaceae)]; **Nat.; Other lists:** NPL, SOL.

[Page] 13

Plants of Madeira

- =312.- *Polypodium Thelypteris* Mscr. *Acrostichum* Th. Linn. fig. pict. [*Christella dentata* (Forssk.) Brownsey & Jermy (Thelypteridaceae)]; **Nat.;** GH, SCV; **Other lists:** NPL, SOL; **Notes:** Revised for Flora of Madeira.
- =313.- ----- *lineatum* Mscr. [*Asplenium billotii* F.W. Schultz (Aspleniaceae)]; **Nat.;** **Herb.:** SCV; **Other lists:** NPL, SOL.
- =314.- ----- *fragile* Linn. [*Cystopteris viridula* (Desv.) Desv. (Woodsiaceae)]; **Nat.;** **Herb.:** GH; **Other lists:** NPL, SOL; **Notes:** Determined by Mary Gibby, 3.II.1989, as *C. diaphana* (Bory) Blasdell. Revised for Flora of Madeira.
- =315.- *Adiantum trapeziforme* Linn. Cabreira Lus. [*Adiantum capillus-veneris* L. (Adiantaceae)]; **Nat.;** **Herb.:** SCV; **Other lists:** NPL, SOL.
- =316.- *Trichomanes canariense* Linn. [*Davallia canariensis* (L.) Sm. (Davalliaceae)]; **Nat.;** **Herb.:** GH, SCV; **Other lists:** NPL, SOL; **Notes:** Revised for Flora of Madeira.
- =317.- *Mnium politrichoides* Linn. [*Mnium* sp. (Mniaceae)]; **Nat.;** **Other lists:** NPL, SOL.
- =318.- *Hypnum rugosum* Mscr. [*Hypnum* sp. (Hypnaceae)]; **Nat.;** **Other lists:** NPL, SOL.
- =319.- *Jungermannia tamariscifolia* Linn. [*Frullania tamarisci* (L.) Dumort. (Jubulaceae)]; **Nat.;** **Other lists:** NPL, SOL.
- =320.- *Lichen articulatus* Linn. Barba Lus. [*Usnea articulata* (L.) Hoffm. (Parmeliaceae)]; **Nat.;** **Other lists:** NPL, SOL.
- =321.- ----- *calicaris* Linn. [*Ramalina calicaris* (L.) Fr. (Ramalinaceae); liquen]; **Nat.;** **Other lists:** NPL, SOL.
- =322.- ----- *digitatus* Linn. [*Cladonia digitata* (L.) Hoffm. (Cladoniaceae)]; **Nat.;** **Other lists:** NPL, SOL.



- =323.- *Marchantia polymorpha* Linn. Patinha Lus. [*Marchantia polymorpha* L. (Marchantiaceae)]; **Nat.**; **Other lists:** NPL, SOL.
- =324.- *Lichen geographicus* Linn. [*Rhizocarpon geographicum* (L.) DC. (Rhizocarpaceae)]; **Nat.**; **Other lists:** NPL, SOL.
- =325.- ----- *calicaris* Linn. [*Ramalina calicaris* (L.) Fr. (Ramalinaceae)]; **Nat.**; **Other lists:** NPL, SOL.
- =326.- *Byssus aurea* Linn. [*Trentepohlia aurea* (L.) Mart. (Trentepohliaceae)]; **Nat.**; **Other lists:** NPL, SOL.
- =327.- *Phoenix dactyfera* Linn. [*Phoenix dactylifera* L. (Arecaceae)]; **Intr.**; **Other lists:** SOL; **Notes:** During Banks and Solander's visit to Madeira the Canary Island palm (*P. canariensis* H. Wildpret) was not recognized as a distinct species. We cannot rule out that this record refers to this Canary Island endemic.

APPENDIX

- =328.- *Faya* Lus. [*Morella faya* (Aiton) Wilbur (Myricaceae)]; **Mac.**; **Herb.:** GH, SCV; **Other lists:** NPL, SOL; **Notes:** Revised by M.J. Short, VI.1986, for Flora of Madeira.
- =329.- *Pao branco* Lus. [*Picconia excelsa* (Aiton) DC. (Oleaceae)]; **Mac.**; **Herb.:** SCV; **Other lists:** NPL, SOL; **Notes:** Not revised for Flora of Madeira.
- =330.- *Salvia major folio glauco serrate*. Sloane Hist. Jam. Pag. 17. T.3 fig.3 [*Teucrium betonicifolium* Jacq. (Lamiaceae)]; **Mad.**; **Herb.:** GH (BM001025250), SCV; **Other lists:** NPL, SOL; **Notes:** Species listed as *T. betonicum* L'Hér. by Press and Short (1994), Jardim and Menezes de Sequeira (2008), and Menezes de Sequeira *et al.* (2012), see details regarding this name in article by Francisco-Ortega *et al.* (2020). Not revised for Flora of Madeira.

HERBARIUM SPECIMENS WITHOUT MATCHING ENTRIES IN BANK'S JOURNAL

For the seven species listed below we located herbarium specimens, but they do not correspond to material recorded in Banks's journal list. Only one of these species, the Madeiran endemic *Bystropogon punctatus*, was recorded in the two other studied documents.

- Bystropogon punctatus* L'Hér. (Lamiaceae); **Mad.**; **Herb.:** GH; **Other lists:** NPL, SOL.
- Galium parisiense* L. (Rubiaceae); **Nat.**; **Herb.:** GH (BM000829003); **Notes:** See entry 49 for further details about this species and this specimen.
- Isolepis cernua* (Vahl) Roem. & Schult. (Cyperaceae); **Nat.**; **Herb.:** GH.
- Plantago coronopus* L. (Plantaginaceae); **Nat.**; **Herb.:** GH. Not revised for Flora of Madeira.
- Plantago maritima* L. (Plantaginaceae); **Nat.**; **Herb.:** GH; **Notes:** This species is not listed by Press and Short (1994), Jardim and Menezes de Sequeira (2008) or Menezes de Sequeira *et al.* (2012). Not revised for Flora of Madeira.
- Rumex cf. crispus* L. (Polygonaceae); **Intr.**; **Herb.:** GH.
- Tolpis barbata* (L.) Gaertn. (Asteraceae); **Nat.**; **Herb.:** GH.



VI. CONCLUDING REMARKS

Our study of Banks and Solander's collections and records from Madeira stem from three documents found in two different countries: Australia and the United Kingdom. These documents are very similar in their content, but because they had different scopes there are differences among them. Solander's *Primitiae Florae Maderensis* aimed to provide a tentative flora for the island and includes both plant records from Cook's expedition and a list of Madeiran taxa previously published by the pre-Linnean naturalists Leonard Plukenet and Hans Sloane (Francisco-Ortega *et al.* 1994; Menezes de Sequeira *et al.* 2010). The second of these documents, the inventory of specimens placed inside the drying books, only provides an index of the collected herbarium material. It includes details on the number of duplicate collections as well as information on the location of specimens inside the drying books. The third document is part of Banks's journal and it is the only one housed in Australia. This manuscript lists all plants that were recorded in Madeira.

Regarding the BM herbarium specimens, they are found in three different sets, namely: the BM general herbarium, one of the expedition's drying book (Madeira III bundle), and one of the bounded volumes of the BM historical collections that contains specimens collected during the voyage.

When the available information and material found in these three different documents and herbarium holdings is analyzed together we found that Banks's collections from Madeira comprised 334 records for 328 taxa. Twenty of these taxa are Madeiran endemics, 19 are Macaronesian endemics, 156 are non-endemic natives, 67 are introduced, and 72 are cultivated. Among them, 305 taxa are spermatophyte, twelve are ferns, two are mosses, two are liverworts, one is an alga, five are lichens, and one is a fungus. Regarding the herbarium material there are 210 collections for 206 taxa, 16 of these taxa are Madeiran endemics, 18 are Macaronesian endemics, 100 are non-endemic natives, 60 are introduced, and 12 are cultivated. These specimens account for ten fern and 196 spermatophyte taxa; and Banks and Solander primarily focused on collecting natives - both endemics and non-endemics.

ACKNOWLEDGEMENTS

The GB-TAF of the Synthesys program (www.synthesys.info) is acknowledged for support for a research visit to BM by ASG. This is contribution 377 from the Tropical Biology Program of Florida International University. Our gratitude to Susana Sa Fontinha for her identifications of bryophytes and to Francisco Fernandes for his help with common plant names used in Madeira. Jordan Goodman helped with the bibliography. Miguel Sequeira and an anonymous reviewer critically read the manuscript. The authors thank the organizing committee of *FloraMac2018* for sponsoring their attendance to this international meeting.



AUTHOR'S CONTRIBUTION

Botanical history review: ASG, JFO, MAC

Location and taxonomic identification of relevant herbarium specimens: ASG, MAC

First draft: ASG, JFO

Review and edition of the final draft: all authors.

RECIBIDO: mayo 2020; ACEPTADO: junio 2020



BIBLIOGRAPHY

- AITON, W. 1789a. *Hortus Kewensis*. Volume 1. London: Georg Nicol 496 pp.
- AITON, W. 1789b. *Hortus Kewensis*. Volume 3. London: Georg Nicol 547 pp.
- BANKS, J., SOLANDER, D.C. and COOK, J. 1985. *Banks' florilegium. A publication in thirty-four parts of seven hundred and thirty-eight copperplate engravings of plants collected on Captain James Cook's first voyage round the world in H.M.S. Endeavour 1768-1771. Part XIX Madeira plates 391-401*. London: Alecto Historical Editions 406 pp.
- BEAGLEHOLE, J.C. (ed.). 1962a. *The Endeavour journal of Joseph Banks 1768-1771*. Volume 1. Sydney: Trustees of the Public Library of New South Wales 406 pp.
- BEAGLEHOLE, J.C. (ed.). 1962b. *The Endeavour journal of Joseph Banks 1768-1771*. Volume 2. Sydney: Trustees of the Public Library of New South Wales 476 pp.
- BRITTEN, J. 1904. R. Brown's list of Madeiran plants. *J. Bot.* 42: 1-8, 39-46, 175-182, 197-200.
- BRULLO, S., GUGLIELMO, A., PAVONE, P. and SALMON, C. 2008. Taxonomy study on *Allium denticiferum* Webb et Berthel. (Alliaceae) and its relations with allied species from the Mediterranean. *Taxon* 57(1): 243-253.
- BUCH, C.L. VON. 1825. *Physicalische beschreibung der Canarischen Inseln*. Berlin: Kön, Akademie der Wissenschaften 407 pp.
- CARVALHO, P., FIGUEIRA, R. and JONES, M.P. 2008. Lista dos líquenes e fungos liquinícolas (fungi). In: Borges, P.A.V., Abreu, C., Aguiar, A.M.F., Carvalho, P., Jardim, R., Melo, I., Oliveira, P., Sérgio, C., Serrano, A.R.M. and Vieira, P. (eds.). *A list of the terrestrial fungi, flora and fauna of Madeira and Selvagens arquipelagos*. Funchal and Hangra do Heroísmo: Direcção Regional do Ambiente do Madeira and Universidade dos Açores pp. 107-122.
- COLE, D. 1980. Sigismund Bacstrom's northwest coast drawings and an account of his curious career. *BC Studies*, 46: 61-86.
- DE CANDOLLE, A. 1841. Second mémoire sur la famille des Myrsinacées. *Ann. Sci. Nat.* 16: 65-97.
- DE WIT, H.C.D. 1957. Some remarks on *Heberdenia* A.DC., *Pleiomeris* A.DC. and *Afrardisia* Mez (Myrs.). *Bull. Jard. Bot. État Bruxelles* 27: 233-242.
- EDWARDS, P.I. 1979. Sir Joseph Banks and the botany of Captain Cook's three voyages of explorations. *Pac. Stud.* 2: 20-43.
- FRANCISCO-ORTEGA, J., SANTOS-GUERRA, A. and JARVIS, C. 1994. Pre-Linnaean references for the Macaronesian flora found in Leonard Plukenet's works and collections. *Bulletin Natural History Museum, London* 24: 1-34.
- FRANCISCO-ORTEGA, J., SANTOS-GUERRA, A., CARINE, M., and JARVIS, C. 2008. Plant hunting in Macaronesia by Francis Masson: the plants sent to Linnaeus and Linnaeus filius. *Bot. J. Linn. Soc.* 157: 393-428.
- FRANCISCO-ORTEGA, J., SANTOS-GUERRA, A., ROMEIRAS, M.M., CARINE, M.A., SÁNCHEZ-PINTO, L. and DUARTE, M.C. 2015. The botany of the three voyages of Captain Cook in Macaronesia: an introduction. *Rev. Acad. Canar. Cienc.* 27: 357-410.
- FRANCISCO-ORTEGA, J., GANDHI, K.N., DUARTE, M.C. SANTOS-GUERRA, A., CARINE, M.A. and ROMEIRAS, M.M. 2020. Captain James Cook and Macaronesian botany: typification and nomenclature updates of the six new species described by Johann R. Forster and J. Georg A. Forster. *Scientia Insularum* 3: 39-54.



- GONZÁLEZ LEMUS, N. 2003. Glosario biográfico de navegantes, naturalistas y viajeros relacionados con el Teide. In: González Lemus, N. (ed.). *El Teide. Representación e identidad. Catálogo Exposición 2003*. Excmo. Cabildo Insular de Tenerife pp. 191-228.
- GONZÁLEZ LEMUS, N. 2012. De los viajeros británicos a Canarias a lo largo de la historia. *Anuario de Estudios Atlánticos* 58: 51-104.
- GOODMAN, J. 2020. Two hundred and fifty years ago today: the Banksian botanical 'suite' arrives in Madeira on HMS *Endeavour*. *Scientia Insularum* 3: 27-33.
- GROVES, E.W. 1962. Notes on the botanical specimens collected by Banks and Solander on Cook's first voyage, together with an itinerary of landing. *Journal of the Society for the Bibliography of Natural History*, 4: 57-62.
- HEBERDEN, E. 1990. Thomas Heberden 1703-1769. Surgeon, physician and naturalist. *Curtis's Bot. Mag.* 7: 131-133.
- HEBERDEN, T. 1752. Observations made in going up the Pic of Teneriffe. *Philos. T. R. Soc.* 47: 353-357.
- JARDIM, R. and MENEZES DE SEQUEIRA, M. 2008. Lista das plantas vasculares (Pteridophyta and Spermatophyta). In: Borges, P.A.V., Abreu, C., Aguiar, A.M.F., Carvalho, P., Jardim, R., Melo, I., Oliveira, P., Sérgio, C., Serrano, A.R.M. and Vieira, P. (eds.). *A list of the terrestrial fungi, flora and fauna of Madeira and Selvagens arquipelagos*. Funchal and Angra do Heroísmo: Direcção Regional do Ambiente do Madeira and Universidade dos Açores pp. 157-207.
- L'HÉRITIER, C.L. 1788. *Sertum anglicum*. Paris: Petri-Francisci Didot 36 pp.
- LIAS. 1995-2020. A global information system for lichenized and lichenilicous Ascomycetes. Available from <http://www.lias.net/>.
- LINNAEUS, C. 1762. *Species plantarum*. Volume 1. Second edition. Stockholm: Laurentii Salvii 784 pp.
- LINNAEUS, C. 1763. *Species plantarum*. Volume 2. Second edition. Stockholm: Laurentii Salvii 900 pp.
- LOBIN, W., LEYENS, T., SANTOS, A., COSTA NEVES, H. and GOMES, I. 2005. The genus *Sideroxylon* (Sapotaceae) on the Madeira, Canary Islands and Cape Verde archipelagoes. *Vieraea* 33: 119-144.
- LOWE, R.T. 1857-1868. *A Manual Flora of Madeira and the adjacent islands of Porto Santo and The Desertas*. Vol. 1, part 1, 1857, part 2, 1862, part 3, 1864, part 4, 1868, part 5, 1868; Vol. 2, part 1, 1872. London: John Van Voorst.
- MATZKE-HAJEK, G., GONÇALVES SILVA, and PAZ, R.F. 2016. The four *Rubus* species of Madeira (Portugal). *Bol. Mus. Nat. Hist. Funchal* 66: 19-30.
- MELO, I. and CARDOSO, J. 2008. Lista dos fungos. In: Borges, P.A.V., Abreu, C., Aguiar, A.M.F., Carvalho, P., Jardim, R., Melo, I., Oliveira, P., Sérgio, C., Serrano, A.R.M. and Vieira, P. (eds.). *A list of the terrestrial fungi, flora and fauna of Madeira and Selvagens arquipelagos*. Funchal and Angra do Heroísmo: Direcção Regional do Ambiente do Madeira and Universidade dos Açores pp. 73-93.
- MENEZES DE SEQUEIRA, M., ESPÍRITO-SANTO, D., AGUIAR, C., CAPELO, J. and HONRADO, J. (Coordinators). 2012. *Checklist da Flora de Portugal (Continental, Açores e Madeira)*. Associação Lusitanica de Fitossociologia 74 pp.
- MENEZES DE SEQUEIRA, M., SANTOS-GUERRA A., JARVIS C.E., OBERLI A., CARINE M.A., MAUNDER, M. and FRANCISCO-ORTEGA J. 2010. The Madeiran plants collected by Sir Hans Sloane in 1687, and his descriptions. *Taxon* 59: 598-612.



- MOORE, D.T. 2001. Some aspects of the work of Robert Brown and the *Investigator* naturalists in Madeira during August 1801. *Arch. Nat. Hist.* 28: 383-394.
- MURRAY, G. 1904. Botany. In: Anonymous (ed.). *The history of the collections contained in the Natural History Departments of the British Museum*. Volume 1. London: Trustees of the British Museum pp. 77-193.
- PRESS, J.R. and SHORT, M.J. (ed.). 1994. *Flora of Madeira*. London: The Natural History Museum 574 pp.
- PUIG-SAMPER, M.A. and PELAYO, F. 1997. *El viaje del astrónomo y naturalista Louis Feuillée a las Islas Canarias (1724)*. La Laguna: Centro de la Cultura Popular Canaria, Ayuntamiento de La Laguna 207 pp.
- SANTOS-GUERRA, A., JARVIS, C.E., CARINE, M.A., MAUNDER, M. and FRANCISCO-ORTEGA, J. 2011. Late 17th century herbarium collections from the Canary Islands: The plants collected by James Cuninghame in La Palma. *Taxon* 60: 1734-1753.
- SÉRGIO, C., SIM-SIM, M., FONTINHA, S. and FIGUEIRA, R. 2008. Lista dos briófitos (Bryophyta). In: Borges, P.A.V., Abreu, C., Aguiar, A.M.F., Carvalho, P., Jardim, R., Melo, I., Oliveira, P., Sérgio, C., Serrano, A.R.M. and Vieira, P. (eds.). *A list of the terrestrial fungi, flora and fauna of Madeira and Selvagens arquipelagos*. Funchal and Angra do Heroísmo: Direcção Regional do Ambiente do Madeira and Universidade dos Açores pp. 143-156.
- STÄHL, B. 1996. The relationships of *Heberdenia bahamensis* and *H. penduliflora* (Myrsinaceae). *Bot. J. Linn. Soc.* 122: 315-333.
- SLOANE, H. 1707. *A voyage to the islands Madera, Barbados, Nieves, S. Christophers and Jamaica*. Volume 1. London: British Museum 592 pp.
- VIEIRA, R. 1992. *Flora da Madeira. O interesse das plantas endémicas Macaronésicas*. Lisboa: Serviço de Parques, Reservas e Conservação da Natureza 155 pp.
- VIEIRA, R. 2002. *Flora da Madeira. Plantas vasculares naturalizadas no arquipélago da Madeira*. Funchal: Museu Municipal do Funchal (História Natural). Suplemento n.º 8, 281 pp.



APPENDIX 1

Accepted names are printed in bold. Names as they were written in Banks's list (Banks's journal housed in State Library of New South Wales, Australia) are printed in regular font.

NAME	ENTRY NUMBER
<i>Acacia farnesiana</i> (L.) Willd.	302
<i>Acanthus mollis</i> L.	190
<i>Acanthus spinosus</i> Linn.....	190
<i>Achyranthes aspera</i> Sicula Linn.....	87
<i>Achyranthes sicula</i> (L.) All.	87
<i>Acrostichum</i> Th. Linn.....	312
<i>Adiantum capillus-veneris</i> L.	315
<i>Adiantum trapeziforme</i> Linn.....	315
* <i>Agave americana</i> L. [§]	110
* <i>Agrimonia eupatoria</i> L.	143
<i>Agrostis bromoides</i> Linn.....	26
<i>Agrostis linearis</i> Mscr.....	25
<i>Agrostis pallida</i> Mscr.....	28
<i>Agrostis sanguinalis</i> Mscr.....	27
<i>Agrostis</i> sp.	25
<i>Agrostis sylvatica</i> Linn.....	29
<i>Aichryson divaricatum</i> (Aiton) Praeger	147
* <i>Allium cepa</i> L.	106
<i>Allium dentiferum</i> Webb & Berthel.	105
<i>Allium oleraceum</i> Linn.....	105
<i>Aloe perfoliata</i> Linn.....	109
<i>Aloe vera</i> (L.) Burm.f.	109
<i>Alsine media</i> Linn.....	101
<i>Alypum angustifolium</i> Mscr.....	47
* <i>Amaranthus blitum</i> L.	276
* <i>Amaranthus hybridus</i> L.	275
* <i>Amaryllis belladonna</i> L.	104
* <i>Ammi majus</i> L.	95
<i>Ammi visnaga</i> (L.) Lam.	94
<i>Amomun Zingiber</i> Linn.....	2



<i>Amygdalus persica</i> Linn.....	155
* <i>Anagallis arvensis</i> L.....	64
<i>Ananas comosus</i> (L.) Merr.....	103
<i>Andropogon hirtum</i> Linn.....	297
<i>Anethum Foeniculum</i> Linn.....	97
* <i>Anthemis cotula</i> L.....	256
<i>Antirrhinum cordatum</i> Mss.....	186
<i>Apium nodiflorum</i> (L.) Lag.....	96
<i>Apium petroselinum</i> Linn.....	98
<i>Apollonias barbujana</i> (Cav.) Bornm. subsp. <i>barbujana</i>	125
<i>Arctium Lappa</i> Linn.....	243
<i>Arctium minus</i> (Hill.) Bernh.....	243
* <i>Aristida adscensionis</i> L. [§]	41
<i>Arrhenatherum elatius</i> (L.) J. Presl & C. Presl subsp. <i>bulbosum</i>	38
<i>Arrhenatherum elatius</i> (L.) J. Presl & C. Presl subsp. <i>bulbosum</i> (Willd.) Schübl. & G. Martens.....	39
<i>Arum colocasia</i> Linn.....	265
<i>Arum italicum</i> Mill. subsp. <i>canariense</i> (Webb & Berthel.) P.C. Boyce.....	266
<i>Arum pictum</i> Mss.....	267
<i>Arum sagittifolium</i> Linn.....	266
* <i>Arundo donax</i> L.....	40
* <i>Asplenium adiantum-nigrum</i> L. [§]	309
<i>Asplenium billotii</i> F.W. Schultz.....	313
* <i>Asplenium marinum</i> L.....	310
* <i>Asplenium monanthos</i> L.....	311
<i>Aster chinensis</i> Linn.....	252
<i>Avena elatior</i> Linn.....	38
* <i>Avena barbata</i> Pott ex Link.....	37
<i>Avena nodosa</i> Linn.....	39
* <i>Ballota nigra</i> L.....	178
<i>Bidens pilosa</i> L. var. <i>radiata</i> (Sch. Bip.) Sherff.....	258
<i>Bignonia radicans</i> Linn.....	189
<i>Bituminaria bituminosa</i> (L.) C.H. Stirton.....	218
* <i>Boletus</i> sp.	SOL
<i>Brachypodium sylvaticum</i> (Huds.) P. Beauv.....	35
* <i>Brassica oleracea</i> L.....	195
* <i>Brassica rapa</i> L.....	196



*Briza maxima L.	32
*Briza minor L.	31
<i>Bromelia Ananas</i> Linn.....	103
<i>Bromus geniculatus</i> Linn.....	36
<i>Bromus madritensis</i> L.	36
<i>Bromus pinnatus</i> Linn.....	35
*Buxus sempervirens L.	272
<i>Bystropogon punctatus</i> L'Hér.	NPL, SOL ⁴
<i>Byssus aurea</i> Linn.....	326
<i>Cactus Ficus indica</i> Linn.....	148
<i>Caladium picturatum</i> K. Koch & C.D. Bouché	267
<i>Calamintha nepeta</i> (L.) Savi subsp. <i>sylvatica</i> (Bromf.) R. Morales	182
*<i>Calendula arvensis</i> L.	260
<i>Callistephus chinensis</i> (L.) Nees.	252
<i>Callitriche stagnalis</i> Scop.	3
<i>Callitriche verna</i> Linn.....	3
*<i>Campanula erinus</i> L.	69
<i>Campsis radicans</i> (L.) Seem.	189
*<i>Canna indica</i> L.	1
*<i>Capsicum annum</i> L.	79
<i>Carduus pycnocephalus</i> Linn.....	244
<i>Carex divulsa</i> Stokes subsp. <i>divulsa</i>	271
*<i>Carica papaya</i> L.[§]	292
<i>Carthamus lanatus</i> Linn.....	246
<i>Carthamus lanatus</i> L. subsp. <i>lanatus</i>	246
*<i>Carthamus tinctorius</i> L.	245
<i>Cassia bicapsularis</i> Linn.....	128
<i>Castanea sativa</i> Mill.	279
<i>Caucalis arvensis</i> Mss.....	93
<i>Cedronella canariensis</i> (L.) Webb & Berthel.	183
<i>Celosia argentea</i> L.	88
<i>Celosia cristata</i> Linn.....	88
<i>Cenchrus ciliaris</i> L.	300
<i>Cenchrus setosus</i> Mscr.....	300
*<i>Centaurea calcitrapa</i> L.	259
<i>Cerastium glomeratum</i> Thuill.	139
<i>Cerastium viscosum</i> Linn.....	139



* <i>Chelidonium majus</i> L.....	168
* <i>Chenopodium album</i> L.....	91
* <i>Chenopodium ambrosioides</i> L.....	92
* <i>Chenopodium murale</i> L.....	90
<i>Christella dentata</i> (Forssk.) Brownsey & Jermy.....	312
<i>Chrysanthemum segetum</i> Linn.....	254
* <i>Cicer arietinum</i> L.....	215
<i>Cichorium endivia</i> L. subsp. <i>divaricatum</i> (Schousb.) P.D. Sell.....	241
<i>Cicoreum intybus</i> Linn.....	241
<i>Cinnamomum verum</i> J.Presl.....	127
<i>Citrullus lanatus</i> (Thunb.) Matsum. & Nakai.....	284
* <i>Citrus x aurantium</i> L. [§]	229
* <i>Citrus medica</i> L.....	228
<i>Cladonia digitata</i> (L.) Hoffm.....	322
* <i>Clethra arborea</i> Aiton [‡]	130
* <i>Clinopodium vulgare</i> L.....	179
<i>Cochlearia coronopus</i> Linn.....	192
* <i>Coix lacryma-jobi</i> L. [§]	270
<i>Colocasia esculenta</i> (L.) Schott.....	265
<i>Consolida ajacis</i> (L.) Schur.....	169
<i>Convolvulus althaeoides</i> L. [§]	65
* <i>Convolvulus althaeoides</i> L.....	68
* <i>Convolvulus arvensis</i> L.....	67
<i>Convolvulus Batatas</i> Linn.....	66
<i>Convolvulus flexuosus</i> Mss.....	65
<i>Conyza canadensis</i> (L.) Cronquist.....	250
<i>Conyza Saxatilis</i> Linn.....	249
<i>Coreopsis Leucanthema</i> Linn.....	258
<i>Cotyledon umbilicus</i> Linn.....	137
<i>Crepis tenuifolia</i> Mss.....	239
<i>Cucubalus Beben</i> Linn.....	133
* <i>Cucumis melo</i> L. [§]	285
* <i>Cucumis sativus</i> L. [§]	286
<i>Cucurbita citrullus</i> Linn.....	284
<i>Cucurbita lagenaria</i> Linn.....	282
* <i>Cucurbita pepo</i> L.....	283
<i>Cullen americanum</i> (L.) Rydb.....	219



*<i>Cupressus sempervirens</i> L.	281
<i>Cydonia oblonga</i> Mill.	162
<i>Cynoglossum cheirifolium</i> Linn.....	61
<i>Cynoglossum creticum</i> Mill.	61, 62
<i>Cynoglossum officinale</i> Linn.....	62
*<i>Cynosurus echinatus</i> L.	34
<i>Cynosurus indicus</i> Linn.....	33
<i>Cyperus flavescens</i> Linn.....	15
*<i>Cyperus rotundus</i> L.	14
<i>Cystopteris viridula</i> (Desv.) Desv.	314
<i>Cytisus scoparius</i> (L.) Link subsp. <i>scoparius</i>	207
*<i>Datura stramonium</i> L. [§]	72
<i>Daucus visnaga</i> Linn.....	94
<i>Davallia canariensis</i> (L.) Sm.	316
<i>Delphinium consolida</i> Linn.....	169
*<i>Dianthus caryophyllus</i> L.	132
<i>Dianthus prolifer</i> Linn.....	131
*<i>Digitalis purpurea</i> L.	188
<i>Digitaria ciliaris</i> (Retz.) Koeler.	27
<i>Digitaria sanguinalis</i> (L.) Scop. [§]	22
*<i>Diospyros lotus</i> L. [§]	303
*<i>Dracaena draco</i> (L.) L.	108
<i>Dracocephalum canariense</i> Linn.....	183
<i>Echinochloa colona</i> (L.) Link.	23
<i>Echium plantagineum</i> L.	63
<i>Echium vulgare</i> Linn.....	63
<i>Eleagnus angustifolia</i> Linn.....	54
<i>Eleusine indica</i> (L.) Gaertn.	33
<i>Elymus repens</i> (L.) Gould	45
*<i>Equisetum arvense</i> L.	305
<i>Erica arborea</i> L.	119
<i>Erica cinerea?</i> Linn.....	119
<i>Erigeron canadense</i> Linn.....	250
<i>Erodium moschatum</i> (L.) Aiton	200
<i>Ervum hirsutum</i> Linn.....	214
<i>Erysimum officinale</i> Linn.....	194
<i>Eugenia Jambos</i> Linn.....	150



<i>Eugenia uniflora</i> L.....	153
* <i>Euphorbia peplus</i> L.....	145
<i>Euphorbia platyphylla</i> L.....	146
<i>Euphorbia verrucosa</i> Linn.....	146
<i>Fagus castanea</i> Linn.....	279
Faya Lus.....	328
<i>Festuca sylvatica</i> Mscr.....	35
* <i>Ficus carica</i> L.....	304
<i>Foeniculum vulgare</i> Mill.....	97
<i>Fragaria vesca</i> L. subsp. <i>vesca</i>	166
<i>Fragaria vesca</i> Linn.....	166
<i>Frullania tamarisci</i> (L.) Dumort.....	319
<i>Fumaria muralis</i> Sond. ex W.D.J. Koch.....	206
<i>Fumaria officinalis</i> Linn.....	206
<i>Galactites tomentosa</i> Moench.....	244
<i>Galium mollugo</i> Linn. var. <i>angustifolia</i>	49
<i>Galium productum</i> Lowe.....	49
<i>Galium parisiense</i> L.....	NA
<i>Galium verrucosum</i> Huds.....	50
<i>Galium vesiculosum</i> Mscr.....	50
<i>Gardenia florida</i> Linn.....	89
<i>Gardenia jasminoides</i> J. Ellis.....	89
<i>Gastroidium ventricosum</i> (Gouan) Schinz & Thell.....	28
<i>Genista canariensis</i> Linn.....	208
<i>Genista tenera</i> (Murray) Kuntze.....	208
<i>Geranium cicutarium</i> Linn.....	200
* <i>Geranium robertianum</i> L.....	199
<i>Gladiolus communis</i> Linn.....	12
<i>Gladiolus</i> cf. <i>italicus</i> Mill.....	12
<i>Glebionis segetum</i> (L.) Fourr.....	254
<i>Globularia salicina</i> Lam.....	47
<i>Gnaphalium crassifolium</i> Mss [crossed].....	247
<i>Gnaphalium luteoalbidum</i> Linn.....	248
<i>Heberdenia bahamensis</i> (Gaertn.) Sprague.....	80
<i>Heberdenia excelsa</i> Mscr.....	80
<i>Hedera helix</i> Linn.....	85
<i>Hedera maderensis</i> A. Rutherf.....	85



<i>*Helianthus annuus</i> L.....	257
<i>Helichrysum obconicum</i> DC.....	247
<i>*Heliotropium europaeum</i> L.....	58
<i>Helminthotheca echioides</i> (L.) Holub.....	235
<i>*Hibiscus rosa-sinensis</i> L. §.....	205
<i>Holcus halepensis</i> Linn.....	298
<i>Holcus lanatus</i> L.....	299
<i>Holcus mollis</i> Linn.....	299
<i>*Hordeum murinum</i> L.....	44
<i>*Hyoscyamus albus</i> L.....	73
<i>Hyparrhenia hirta</i> (L.) Stapf.....	297
<i>*Hypericum canariense</i> L.....	230
<i>Hypericum eVectum</i> Mscr.....	234
<i>*Hypericum glandulosum</i> Aiton.....	233
<i>Hypericum grandifolium</i> Choisy.....	234
<i>*Hypericum humifusum</i> L.....	232
<i>*Hypericum perforatum</i> L.....	231
<i>Hypnum rugosum</i> Mscr.....	318
<i>Hypnum</i> sp.....	318
<i>Ilex Azevinho</i> Mss.....	56
<i>Ilex canariensis</i> Poir.....	56
<i>Ilex perado</i> Aiton subsp. <i>perado</i>	55
<i>Ilex perado</i> Mss.....	55
<i>*Impatiens balsamina</i> L.....	263
<i>Ipomoea batatas</i> (L.) Lam.....	66
<i>*Iris</i> sp. ¥.....	13
<i>*Isatis tinctoria</i> L.....	198
<i>Isolepis cernua</i> (Vahl) Roem. & Schult.....	NA
<i>Isolepis setacea</i> (L.) R.Br.....	16
<i>*Jasminum grandiflorum</i> L.....	6
<i>*Jasminum officinale</i> L.....	5
<i>Jasminum sambac</i> (L.) Aiton.....	4
<i>*Juglans regia</i> L.....	278
<i>*Juncus effusus</i> L. §.....	111
<i>Juncus inflexus</i> L.....	112
<i>Juncus tenax</i> Mscr.....	112
<i>Jungermannia tamariscifolia</i> Linn.....	319



<i>Juniperus oxycedrus</i> Linn.....	293
<i>Juniperus cedrus</i> Webb & Berthel. subsp. <i>maderensis</i> Rivas Mart. et al.	293
<i>Kickxia elatine</i> (L.) Dumort.	186
*<i>Lactuca sativa</i> L.	237
<i>Lagenaria siceraria</i> (Molina) Standl.	282
<i>Lapsana stellata</i> Linn.....	240
<i>Laurus cinamomum</i> Linn.....	127
<i>Laurus foetens</i> Mscr.....	126
<i>Laurus indica</i> Linn.....	124
<i>Laurus nitida</i> Mscr.....	125
<i>Laurus nobilis</i> Linn.....	123
<i>Laurus novocanariensis</i> Rivas Mart. et al.	123
<i>Lavandula pinnata</i> L. f.	173
<i>Lecanora subfusca</i> (L.) Ach.	NPL, SOL
<i>Legousia scabra</i> (Lowe) Gamisans	261
*<i>Lemna minor</i> L.	268
<i>Leontodon nudicaulis</i> Mss.....	238
<i>Leontodon taraxacoides</i> (Vill.) Mérat	238
<i>Lepidium coronopus</i> (L.) Al-Shehbaz	192
*<i>Lepidium virginicum</i> L.	191
<i>Lichen articulatus</i> Linn.....	320
<i>Lichen calicaris</i> Linn.....	321, 325
<i>Lichen digitatus</i> Linn.....	322
<i>Lichen geographicus</i> Linn.....	324
<i>Lichen subfuscus</i>	NPL, SOL
*<i>Lilium candidum</i> L.	107
*<i>Linum bienne</i> Mill.	102
*<i>Liriodendron tulipifera</i> L.[§]	171
<i>Lobelia longifolia</i> Mscr.....	261
*<i>Lolium perenne</i> L.	42
*<i>Lolium temulentum</i> L.	43
*<i>Lonicera caprifolium</i> L.	70
*<i>Lotus corniculatus</i> L.	NPL, SOL
*<i>Lotus glaucus</i> Aiton[‡]	225
<i>Lotus lancerottensis</i> Webb et Berthel.	NPL, SOL
<i>Lupinus albus</i> L. ssp. <i>albus</i>	209
<i>Lupinus albus</i> Linn.....	209



<i>Lycium barbarum</i> Linn.....	81
<i>Lycium europaeum</i> L.....	81
<i>Lycopersicon esculentum</i> Mill.....	78
* <i>Lythrum hyssopifolia</i> L. [§]	142
<i>Malus pumila</i> Mill.....	161
<i>Malva mauritanica</i> Linn.....	204
<i>Malva rotundifolia</i> Linn.....	203
<i>Malva sylvestris</i> L.....	203, 204
* <i>Mangifera indica</i> L.....	82
* <i>Marchantia polymorpha</i> L.....	323
<i>Matricaria parthenium</i> Linn.....	255
<i>Meadia repens</i> Mscr.....	113
* <i>Medicago lupulina</i> L.....	227
<i>Medicago polymorpha</i> L.....	226
<i>Medicago polymorpha muricata</i> Linn.....	226
<i>Melilotus angustifolium</i> Linn.....	224
<i>Melilotus elegans</i> Salzm. ex Ser.....	223
<i>Melissa calamintha</i> Linn.....	182
<i>Mentha maderensis insulae, minus odorata</i> Plukn. Alm. 248 [...].....	NPL, SOL [‡]
* <i>Mentha pulegium</i> L.....	175
<i>Mentha rotundifolia</i> Linn.....	176
<i>Mentha suaveolens</i> Ehrh.....	176
<i>Mercurialis ambigua</i> Linn.....	291
<i>Mercurialis annua</i> L.....	291
Mermulano Heb. Mss. [†]	116
* <i>Mespilus germanica</i> L.....	159
<i>Milium paradoxum</i> Linn.....	24
<i>Mimosa Farnesiana</i> Linn.....	302
* <i>Mirabilis jalapa</i> L. [§]	71
<i>Mnium politrichoides</i> Linn.....	317
<i>Mnium</i> sp.....	317
<i>Morella faya</i> (Aiton) Wilbur.....	328
* <i>Morus nigra</i> L.....	274
<i>Musa acuminata</i> Colla.....	296
<i>Musa sapientium</i> Linn.....	296
<i>Myosotis arvensis</i> (L.) Hill.....	60
<i>Myosotis scorpioides arvensis</i> Linn.....	60



<i>Myosotis scorpioides palustris</i> Linn.....	59
<i>Myosotis secunda</i> Al.Murray	59
<i>Myrtus communis Lusitanica</i> Linn.....	151
<i>Myrtus communis</i> L. subsp. <i>communis</i>	151
<i>Myrtus communis</i> L. subsp. <i>tarentina</i> (L.) Nyman	152
<i>Myrtus pulposa</i> Mss.....	153
<i>Myrtus tarentina</i> Linn.....	152
*<i>Nicotiana tabacum</i> L. [§]	74
*<i>Nigella damascena</i> L.	170
<i>Nyctanthes sambac</i> Linn.....	4
*<i>Ocimum basilicum</i> L. [§]	184
<i>Ocotea foetens</i> (Aiton) Baill.	126
<i>Olea europea</i> Linn.....	7
<i>Olea maderensis</i> (Lowe) Rivas Mart. & del Arco	7, 54
<i>Opuntia ficus-barbarica</i> A. Berger.	148
<i>Origanum creticum</i> Linn.....	180
<i>Origanum vulgare</i> L. subsp. <i>virens</i> (Hoffmanns. & Link) Ietsw.	180
*<i>Ornithopus pinnatus</i> (Mill.) Druce	216
<i>Oryzopsis miliacea</i> (L.) Asch. & Schweinf.	24
<i>Osmunda Maderensis</i> Mscr.....	306
<i>Osmunda spicant</i> Linn.....	307
*<i>Oxalis corniculata</i> L.	138
<i>Panicum Cruz Corvi</i> Linn.....	23
<i>Panicum glaucum</i> Linn.....	21
<i>Panicum Junceum</i> Mscr. [crossed].....	20
<i>Panicum repens</i> L.	20
<i>Panicum sanguinale</i> Linn.....	22
<i>Pao branco</i> Lus.....	329
<i>Parietaria judaica</i> L.	NA, 301
*<i>Parietaria officinalis</i> L.	301
*<i>Passiflora quadrangularis</i> L.	264
<i>Pennisetum glaucum</i> (L.) R.Br.	21
<i>Persea indica</i> (L.) Spreng.	124
<i>Persicaria hydropiper</i> (L.) Spach	121,122
<i>Petrorhagia nanteuilli</i> (Burnat)P.W. Ball & Heywood	131
<i>Petroselinum crispum</i> (Mill.) Fuss.	98
<i>Phagnalon saxatile</i> (L.) Cass.	249



*Phalaris canariensis L.	18
<i>Phalaris oblongata</i> Mss.	19
Phalaris coerulescens Desf.	19
*Phaseolus coccineus L. §	211
*Phaseolus vulgaris L. §	210
<i>Phoenix canariensis</i> H. Wildpret.....	327
*Phoenix dactylifera L.	327
Phytolacca americana L.	140
<i>Phytolacca decandra</i> Linn.....	140
Picconia excelsa (Aiton) DC.	329
<i>Picris Echioides</i> Linn.....	235
*Pinus pinaster Aiton.	280
*Pisum sativum L.	212
<i>Plantago albicans</i> L.....	53
Plantago coronopus L.	NA
Plantago lagopus L.	NA, 53
*Plantago lanceolata L.	51, 53
Plantago maritima L.	NA
*Plantago media L.	52
*Poa annua L.	30
*Polycarpon tetraphyllum (L.) L.	46
*Polygonum aviculare L.	120
<i>Polygonum Barbatum</i> Linn.....	122
<i>Polygonum Hydropiper</i> Linn.....	121
<i>Polypodium fragile</i> Linn.....	314
<i>Polypodium lineatum</i> Mscr.....	313
<i>Polypodium Thelypteris</i> Mscr.....	312
Polypogon viridis (Gouan) Breist.	29
*Populus alba L.	290
<i>Portulaca oleracea</i> Linn.....	141
Portulaca oleracea L. subsp. oleracea	141
*Potentilla reptans L.	167
<i>Poterium sanguisorba</i> Linn.....	277
*Prunella vulgaris L.	185
*Prunus armeniaca L. §	156
*Prunus cerasus L.	157
*Prunus domestica L.	158



<i>Prunus persica</i> (L.) Batsch	155
<i>Pseudognaphalium luteoalbum</i> (L.) Hilliard & B.L. Burtt	248
<i>Psidium guajava</i> L.	149
<i>Psidium pyrififerum</i> Linn.....	149
<i>Psoralea americana</i> Linn.....	219
<i>Psoralea bituminosa</i> Linn.....	218
<i>Pteridium aquilinum</i> (L.) Kuhn	308
<i>Pteris aquilina</i> Linn.....	308
<i>Pteris incompleta</i> Cav.	306
*<i>Punica granatum</i> L.	154
<i>Pycreus flavescens</i> (L.) Rchb.	15
*<i>Pyrus communis</i> L.	160
<i>Pyrus cydonia</i> Linn.....	162
<i>Pyrus Malus</i> Linn. [§]	161
*<i>Ramalina calicaris</i> (L.) Fr.	321, 325
*<i>Ranunculus repens</i> L.	172
*<i>Reseda luteola</i> L.	144
<i>Rhagadiolus stellatus</i> (L.) Gaertn.	240
<i>Rhizocarpon geographicum</i> (L.) DC.	324
*<i>Rhus coriaria</i> L.	99
*<i>Ribes grossularia</i> L.	84
*<i>Ribes rubrum</i> L.	83
<i>Rorippa nasturtium-aquaticum</i> (L.) Hayek	193
*<i>Rosa gallica</i> L.	163
*<i>Rosmarinus officinalis</i> L.	10
<i>Rubus fruticosus</i> Linn.....	165
<i>Rubus pedatus</i> Mss.....	164
<i>Rubus serrae</i> Solano	164
<i>Rubus ulmifolius</i> Schott	165
<i>Rumex aquaticus</i> Linn.....	114
<i>Rumex conglomeratus</i> Murray	114
<i>Rumex</i> cf. <i>crispus</i> L.	NA
<i>Rumex maderensis</i> Lowe	115
<i>Rumex scutatus</i> Linn.....	115
<i>Ruscus androgynus</i> Linn.....	295
<i>Ruta chalepensis</i> L.	129
<i>Ruta graveolens</i> L.....	129



*Saccharum officinarum L. [§]	17
*Sagina procumbens L.	57
<i>Salix Helix</i> Linn.....	288
<i>Salix purpurea</i> Linn.....	287
<i>Salix x rubens</i> Schrank	287, 288
<i>Salvia major folio glauco serrate</i>	330
*Salvia officinalis L.	11
*Sambucus ebulus L.	100
<i>Sanguisorba verrucosa</i> (G.Don) Ces.	277
<i>Scirpus setaceus</i> Linn.....	16
<i>Scolymus hispanicus</i> Linn.....	242
<i>Scolymus maculatus</i> L.	242
*Scorpiurus vermiculatus L. [§]	217
*Scrophularia scorodonia L.	187
<i>Semele androgyna</i> (L.) Kunth	295
<i>Sempervivum arboreum</i> Linn.....	147
<i>Senecio lividus</i> L.	251
<i>Senecio viscosus</i> Linn.....	251
<i>Senna bicapsularis</i> (L.) Roxb.	128
*Sherardia arvensis L.	48
<i>Sibthorpia peregrina</i> L.	113
<i>Sida</i> [¥]	202
*Sida rhombifolia L. [§]	201
<i>Sida spinosa</i> L.	202
<i>Sideritis canariensis</i> Linn.....	174
<i>Sideritis candicans</i> Aiton	174
<i>Sideroxylon mirmulans</i> R.Br.	116
*Silene gallica L.	134
*Silene inaperta L.	135
<i>Silene vulgaris</i> (Moench) Garcke subsp. <i>vulgaris</i>	133
*Sinapis arvensis L.	197
<i>Sisymbrium Nasturtium</i> Linn.....	193
<i>Sisymbrium officinale</i> (L.) Scop.	194
<i>Sium nodiflorum?</i> Linn.....	96
<i>Smilax latifolia</i> Mss.....	289
<i>Smilax pendulina</i> Lowe	289
<i>Solanum americanum</i> Mill.	76



<i>Solanum Lycopersicum</i> Linn.....	78
<i>Solanum nigrum</i> Linn.....	76
*<i>Solanum pseudocapsicum</i> L.	77
*<i>Solanum tuberosum</i> L.	75
<i>Sonchus asper</i> (L.) Hill	236
<i>Sonchus oleraceus</i> Linn.....	236
<i>Sorghum halepense</i> (L.) Pers.	298
<i>Spartium scoparium</i> Linn.....	207
*<i>Stachys arvensis</i> (L.) L.	177
<i>Stellaria alsine</i> Grimm	136
<i>Stellaria graminea</i> Linn.....	136
<i>Stellaria media</i> (L.) Vill.	101
<i>Struthiopteris spicant</i> (L.) F.W. Weiss	307
<i>Syzygium jambos</i> (L.) Alston	150
*<i>Tagetes erecta</i> L.	253
<i>Tanacetum parthenium</i> (L.) Sch. Bip.	255
*<i>Taxus baccata</i> L.	294
<i>Teucrium betonicifolium</i> Jacq.	330
*<i>Thymus vulgaris</i> L.	181
<i>Tolpis barbata</i> (L.) Gaertn.	NA
<i>Tolpis succulenta</i> (Aiton) Lowe	239
<i>Torilis arvensis</i> (Huds.) Link subsp. <i>neglecta</i> (Spreng.) Thell.	93
<i>Trentepohlia aurea</i> (L.) Mart.	326
<i>Trichomanes canariense</i> Linn.....	316
<i>Trifolium agrarium</i> Linn.....	221
*<i>Trifolium angustifolium</i> L.	224
<i>Trifolium dubium</i> Sibth.	221
*<i>Trifolium glomeratum</i> L.	220
<i>Trifolium Melilotus Italica</i> Linn.....	223
*<i>Trifolium repens</i> L.	222
<i>Triticum repens</i> Linn.....	45
<i>Tropaeolum minus</i> L.....	117
<i>Tropaeolum majus</i> L.	117
<i>Umbilicus rupestris</i> (Salisb.) Dandy	137
<i>Urtica membranacea</i> Savigny	273
<i>Urtica urens</i> Linn.....	273
<i>Usnea articulata</i> (L.) Hoffm.	320



<i>Vaccinium elevatum</i> Mss.....	118
<i>Vaccinium padifolium</i> Sm.....	118
* <i>Verbena officinalis</i> L.....	9
<i>Veronica anagallis</i> Linn.....	8
<i>Veronica anagallis-aquatica</i> L.....	8
<i>Vicia gracilis</i> Mss.....	213
<i>Vicia hirsuta</i> (L.) Gray.....	214
<i>Vicia articulata</i> Hornm.....	213
* <i>Viola odorata</i> L.....	262
* <i>Vitis vinifera</i> L.....	86
<i>Vulpia bromoides</i> (L.) Gray.....	26
* <i>Zea mays</i> L.....	269
<i>Zingiber officinale</i> Roscoe.....	2

Notes to the Taxonomic Index:

* Taxon for which the accepted name matches that written in Banks's journal list or Solander's flora.

§ Name reported in Banks's journal list either (i) is a slight orthographical variant of the accepted scientific name (ii) has the specific epithet in upper case or (iii) has an authority does not match that of the accepted scientific name.

‡ Banks's journal list only reports the generic name.

‡ Name reported in Banks's journal list with the codes "Mscr." or "Mss." These names were considered new taxa by Banks and Solander.

† Refers to Thomas Heberden.

‡ Species for which there is herbarium material.

NA refers to species for which there is herbarium material but it was not recorded in Banks's journal list nor in Solander's unpublished *Primitiae Florae Maderensis, sive catalogus Plantarum in Insula Madera*.

NPL refers to species listed in the index to the contents of the drying books but not recorded in Banks's journal list.

SOL refers to species listed in Solander's flora but not recorded in Banks's journal list.

